

DACH1 RABBIT PAB

Cat.#: S217337

Product Name: Anti-DACH1 Rabbit Polyclonal Antibody

Synonyms: DACH

UNIPROT ID: Q9UI36 (Gene Accession - BC021219)

Background: This gene encodes a chromatin-associated protein that associates with other DNA-binding transcription factors to regulate gene expression and cell fate determination during development. The protein contains a Ski domain that is highly conserved from *Drosophila* to human. Expression of this gene is lost in some forms of metastatic cancer, and is correlated with poor prognosis. Multiple transcript variants encoding different isoforms have been found for this gene.

Immunogen: Fusion protein of human DACH1

Applications: ELISA, IHC

Recommended Dilutions: IHC: 50-200; ELISA: 5000-10000

Host Species: Rabbit

Clonality: Rabbit Polyclonal

Isotype: Immunogen-specific rabbit IgG

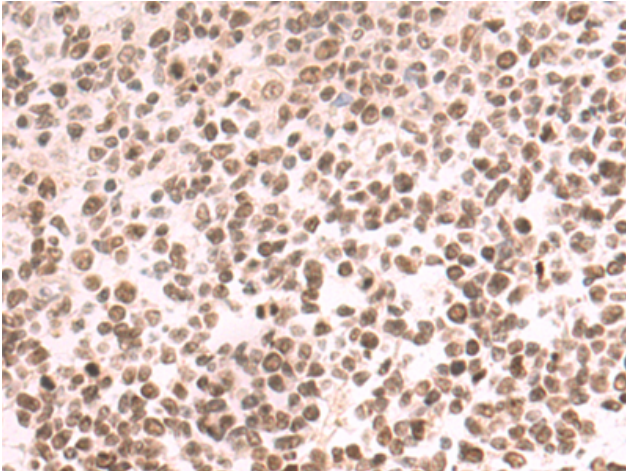
Purification: Antigen affinity purification

Species Reactivity: Human, Mouse

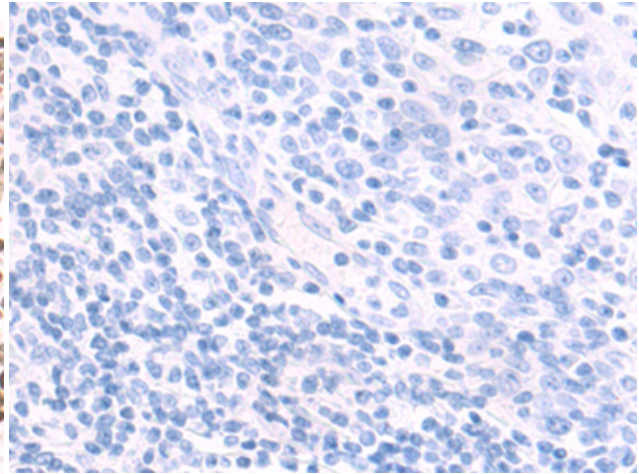
Constituents: PBS (without Mg²⁺ and Ca²⁺), pH 7.4, 150 mM NaCl, 0.05% Sodium Azide and 40% glycerol

Research Areas: Epigenetics and Nuclear Signaling, Cancer

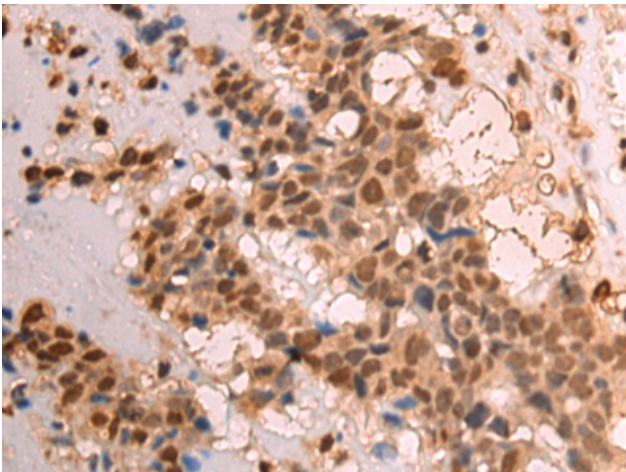
Storage & Shipping: Store at -20°C. Avoid repeated freezing and thawing



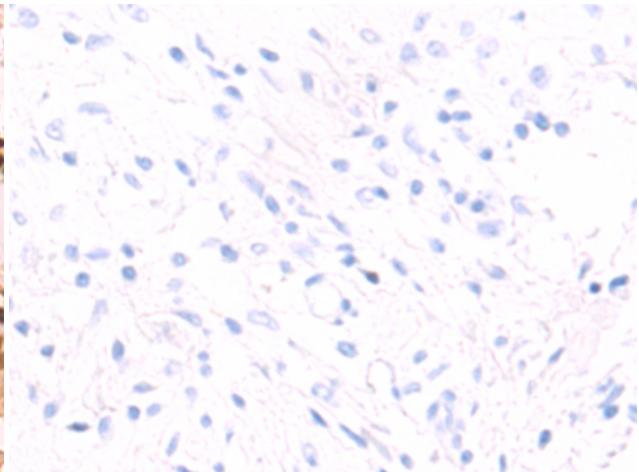
Immunohistochemistry analysis of paraffin embedded Human tonsil tissue using 217337 (DACHI Antibody) at a dilution of 1/70 (Nucleus).



In comparison with the IHC on the left, the same paraffin-embedded Human tonsil tissue is first treated with the fusion protein and then with 217337 (Anti-DACHI Antibody) at dilution 1/70.



The image on the left is immunohistochemistry of paraffin-embedded Human breast cancer tissue using 217337 (Anti-DACHI Antibody) at a dilution of 1/70.



In comparison with the IHC on the left, the same paraffin-embedded Human breast cancer tissue is first treated with fusion protein and then with D222197 (Anti-DACHI Antibody) at dilution 1/70.