

## DAPP1 RABBIT PAB

**Cat.#:** S221880

**Product Name:** Anti-DAPP1 Rabbit Polyclonal Antibody

**Synonyms:** BAM32

**UNIPROT ID:** Q9UNI9 (Gene Accession - NP\_055210 )

**Background:** May act as a B-cell-associated adapter that regulates B-cell antigen receptor (BCR)-signaling downstream of PI3K.

**Immunogen:** Synthetic peptide of human DAPP1

**Applications:** ELISA, IHC

**Recommended Dilutions:** IHC: Oct-50; ELISA: 2000-5000

**Host Species:** Rabbit

**Clonality:** Rabbit Polyclonal

**Isotype:** Immunogen-specific rabbit IgG

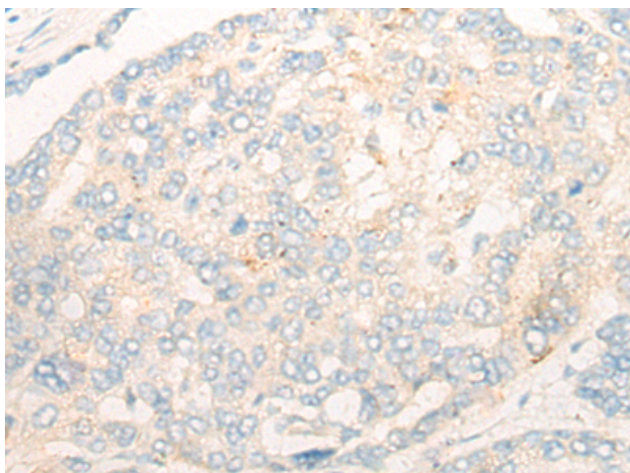
**Purification:** Antigen affinity purification

**Species Reactivity:** Human, Mouse

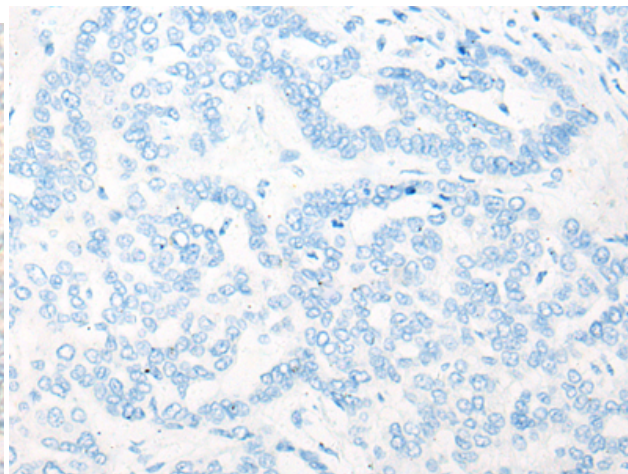
**Constituents:** PBS (without Mg<sup>2+</sup> and Ca<sup>2+</sup>), pH 7.4, 150 mM NaCl, 0.05% Sodium Azide and 40% glycerol

**Research Areas:** Signal Transduction, Immunology

**Storage & Shipping:** Store at -20°C. Avoid repeated freezing and thawing



Immunohistochemistry analysis of paraffin embedded Human liver cancer tissue using 221880(DAPP1 Antibody) at a dilution of 1/20(Cytoplasm).



In comparison with the IHC on the left, the same paraffin-embedded Human liver cancer tissue is first treated with the synthetic peptide and then with 221880(Anti-DAPP1 Antibody) at dilution 1/20.