

## DBT RABBIT PAB

**Cat.#:** S215647

**Product Name:** Anti-DBT Rabbit Polyclonal Antibody

**Synonyms:** E2; E2B; BCATE2; BCKADE2; BCKAD-E2; BCOADC-E2

**UNIPROT ID:** P11182 (Gene Accession - NP\_001909 )

**Background:** The branched-chain alpha-keto acid dehydrogenase complex (BCKD) is an inner-mitochondrial enzyme complex involved in the breakdown of the branched-chain amino acids isoleucine, leucine, and valine. The BCKD complex is thought to be composed of a core of 24 transacylase (E2) subunits, and associated decarboxylase (E1), dehydrogenase (E3), and regulatory subunits. This gene encodes the transacylase (E2) subunit. Mutations in this gene result in maple syrup urine disease, type 2. Alternatively spliced transcript variants have been described, but their biological validity has not been determined.

**Immunogen:** Synthetic peptide of human DBT

**Applications:** ELISA, WB, IHC

**Recommended Dilutions:** IHC: Oct-50;WB: 200-1000;ELISA: 5000-10000

**Host Species:** Rabbit

**Clonality:** Rabbit Polyclonal

**Isotype:** Immunogen-specific rabbit IgG

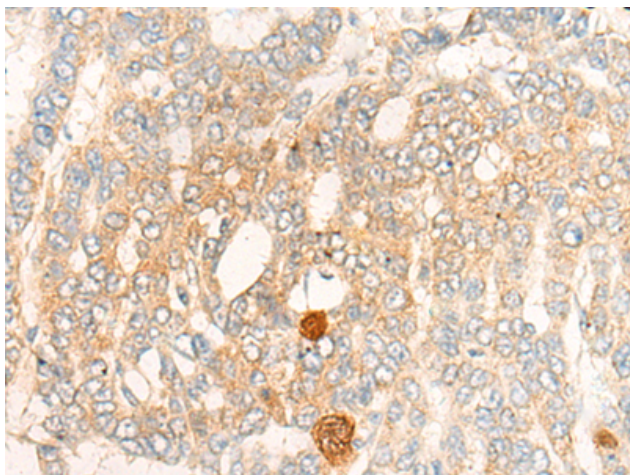
**Purification:** Antigen affinity purification

**Species Reactivity:** Human, Mouse

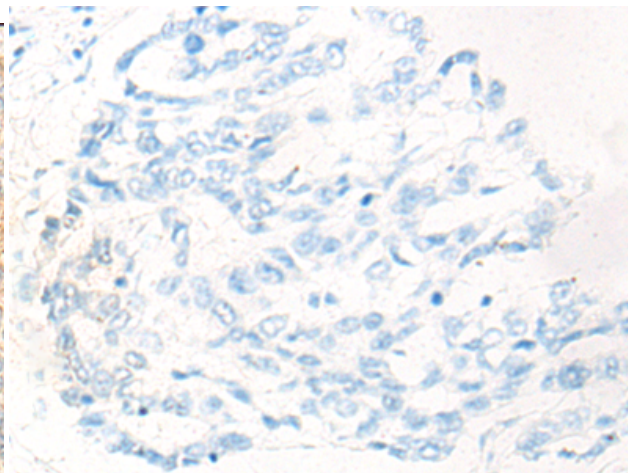
**Constituents:** PBS (without Mg<sup>2+</sup> and Ca<sup>2+</sup>), pH 7.4, 150 mM NaCl, 0.05% Sodium Azide and 40% glycerol

**Research Areas:** Metabolism

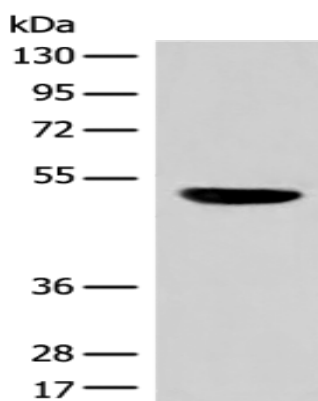
**Storage & Shipping:** Store at -20°C. Avoid repeated freezing and thawing



Immunohistochemistry analysis of paraffin embedded Human liver cancer tissue using 215647(DBT Antibody) at a dilution of 1/20(Cytoplasm).



In comparison with the IHC on the left, the same paraffin-embedded Human liver cancer tissue is first treated with the synthetic peptide and then with 215647(Anti-DBT Antibody) at dilution 1/20.



Gel: 8%SDS-PAGE, Lysate: 40  $\mu$ g;  
Lane: Mouse liver tissue lysate;  
Primary antibody: 215647(DBT Antibody) at dilution 1/250;  
Secondary antibody: Goat anti rabbit IgG at 1/8000 dilution;  
Exposure time: 30 seconds