

DCAF1 RABBIT PAB

Cat.#: S222417

Product Name: Anti-DCAF1 Rabbit Polyclonal Antibody

Synonyms: RIP; VPRBP

UNIPROT ID: Q9Y4B6 (Gene Accession - NP_055518)

Background: Enables estrogen receptor binding activity and histone kinase activity (H2A-T120 specific). Involved in cell competition in a multicellular organism; histone H2A-T120 phosphorylation; and negative regulation of transcription by RNA polymerase II. Located in fibrillar center and nucleoplasm. Part of Cul4-RING E3 ubiquitin ligase complex. Colocalizes with COP9 signalosome.

Immunogen: Synthetic peptide of human DCAF1

Applications: ELISA, IHC

Recommended Dilutions: IHC: 50-200; ELISA: 5000-10000

Host Species: Rabbit

Clonality: Rabbit Polyclonal

Isotype: Immunogen-specific rabbit IgG

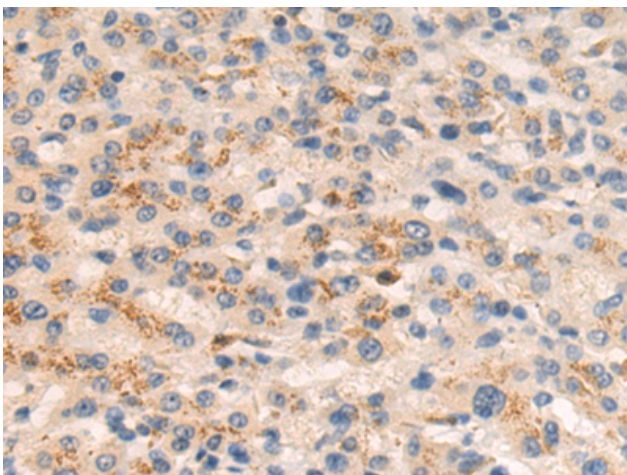
Purification: Antigen affinity purification

Species Reactivity: Human, Mouse

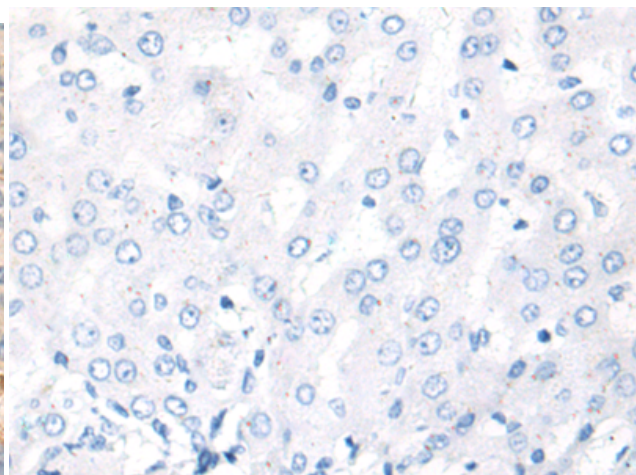
Constituents: PBS (without Mg²⁺ and Ca²⁺), pH 7.4, 150 mM NaCl, 0.05% Sodium Azide and 40% glycerol

Research Areas: Epigenetics and Nuclear Signaling

Storage & Shipping: Store at -20°C. Avoid repeated freezing and thawing



Immunohistochemistry analysis of paraffin embedded Human liver cancer tissue using 222417(DCAF1 Antibody) at a dilution of 1/50(Cytoplasm).



In comparison with the IHC on the left, the same paraffin-embedded Human liver cancer tissue is first treated with the synthetic peptide and then with 222417(Anti-DCAF1 Antibody) at dilution 1/50.