

DCAF10 RABBIT PAB

Cat.#: S219021

Product Name: Anti-DCAF10 Rabbit Polyclonal Antibody

Synonyms: WDR32

UNIPROT ID: Q5QP82 (Gene Accession - BC003520)

Background: May function as a substrate receptor for CUL4-DDB1 E3 ubiquitin-protein ligase complex.

Immunogen: Fusion protein of human DCAF10

Applications: ELISA, IHC

Recommended Dilutions: IHC: 50-300; ELISA: 5000-10000

Host Species: Rabbit

Clonality: Rabbit Polyclonal

Isotype: Immunogen-specific rabbit IgG

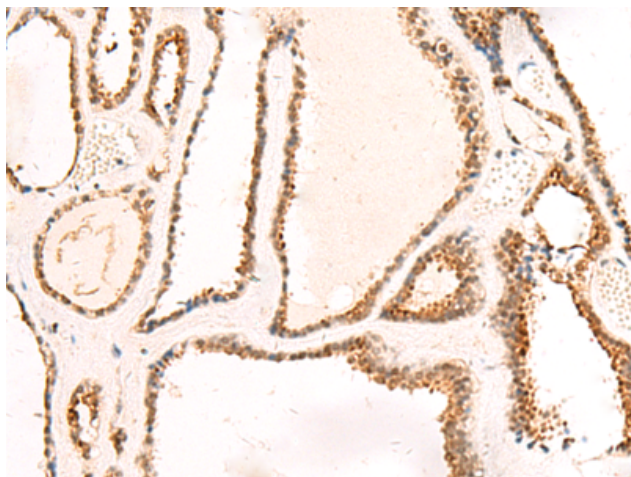
Purification: Antigen affinity purification

Species Reactivity: Human, Mouse

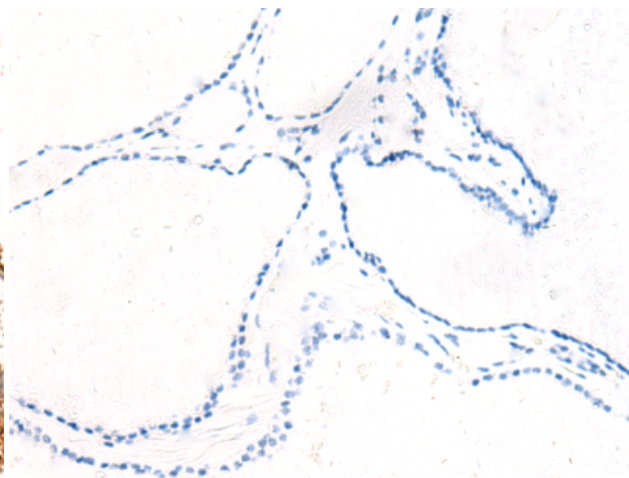
Constituents: PBS (without Mg²⁺ and Ca²⁺), pH 7.4, 150 mM NaCl, 0.05% Sodium Azide and 40% glycerol

Research Areas: Cell Biology

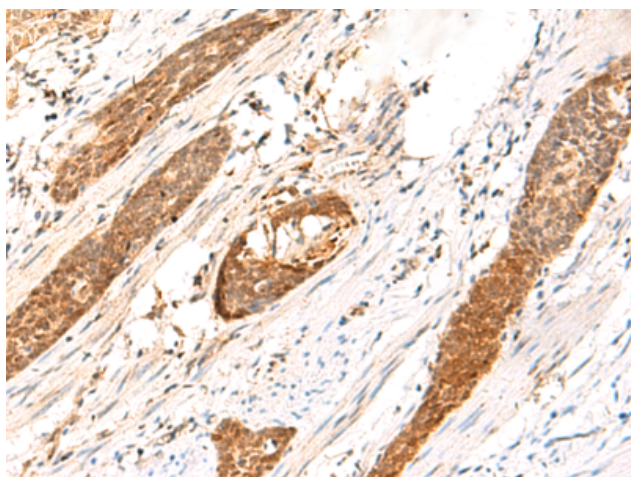
Storage & Shipping: Store at -20°C. Avoid repeated freezing and thawing



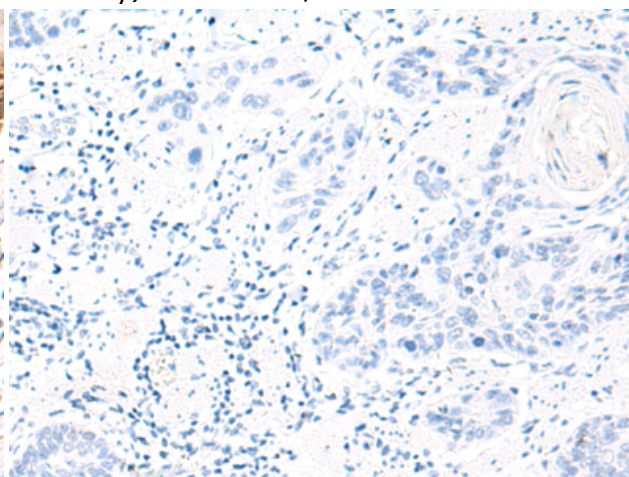
Immunohistochemistry analysis of paraffin embedded Human thyroid cancer tissue using 219021(DCAF10 Antibody) at a dilution of 1/130(Nucleus).



In comparison with the IHC on the left, the same paraffin-embedded Human thyroid cancer tissue is first treated with the fusion protein and then with 219021(Anti-DCAF10 Antibody) at dilution 1/130.



The image on the left is immunohistochemistry of paraffin-embedded Human esophagus cancer tissue using 219021(Anti-DCAF10 Antibody) at a dilution of 1/130.



In comparison with the IHC on the left, the same paraffin-embedded Human esophagus cancer tissue is first treated with fusion protein and then with D225666(Anti-DCAF10 Antibody) at dilution 1/130.