

## DCBLD1 RABBIT PAB

**Cat.#:** S212295

**Product Name:** Anti-DCBLD1 Rabbit Polyclonal Antibody

**Synonyms:** dJ94G16.1

**UNIPROT ID:** Q8N8Z6 (Gene Accession - BC035671 )

**Background:** The specific function of the protein remains unknown.

**Immunogen:** Fusion protein of human DCBLD1

**Applications:** ELISA, IHC

**Recommended Dilutions:** IHC: 50-200; ELISA: 5000-10000

**Host Species:** Rabbit

**Clonality:** Rabbit Polyclonal

**Isotype:** Immunogen-specific rabbit IgG

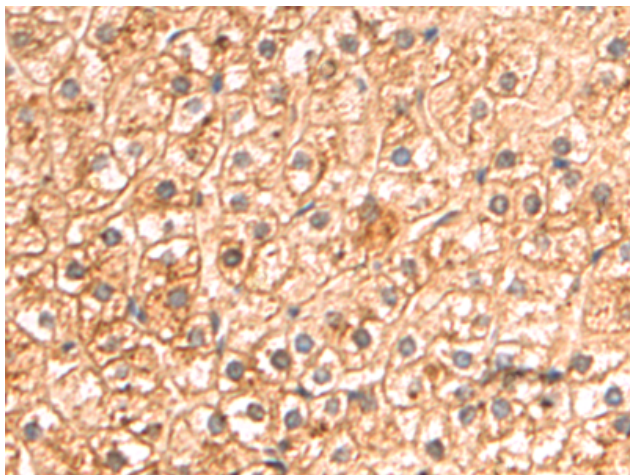
**Purification:** Antigen affinity purification

**Species Reactivity:** Human

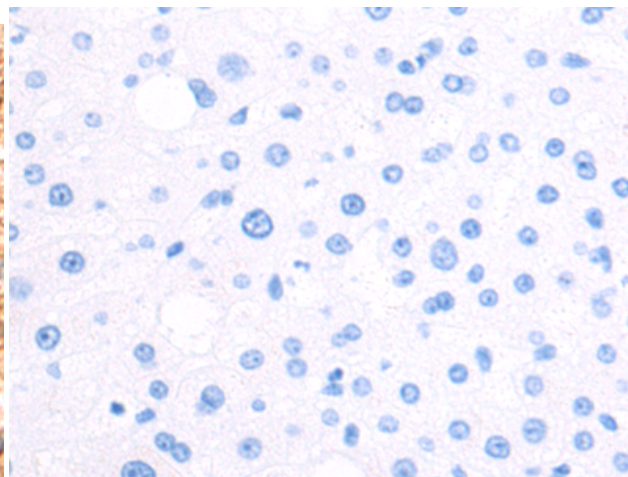
**Constituents:** PBS (without Mg<sup>2+</sup> and Ca<sup>2+</sup>), pH 7.4, 150 mM NaCl, 0.05% Sodium Azide and 40% glycerol

**Research Areas:** Cell Biology

**Storage & Shipping:** Store at -20°C. Avoid repeated freezing and thawing



Immunohistochemistry analysis of paraffin embedded Human liver cancer tissue using 212295(DCBLD1 Antibody) at a dilution of 1/60(Cytoplasm and Cell membrane).



In comparison with the IHC on the left, the same paraffin-embedded Human liver cancer tissue is first treated with the fusion protein and then with 212295(Anti-DCBLD1 Antibody) at dilution 1/60.