

DCI RABBIT MAB

Cat.#: N262120

Product Name: Anti-DCI Rabbit Monoclonal Antibody

Synonyms: ECII; DCI; Enoyl-CoA delta isomerase 1; mitochondrial; 3; 2-trans-enoyl-CoA isomerase; Delta(3); Delta(2)-enoyl-CoA isomerase; D3; D2-enoyl-CoA isomerase; Dodecenoyl-CoA isomerase

UNIPROT ID: P42126

Background: Able to isomerize both 3-cis and 3-trans double bonds into the 2-trans form in a range of enoyl-CoA species.

Immunogen: A synthetic peptide of human DCI

Applications: WB,IHC-F,IHC-P,ICC/IF

Recommended Dilutions: WB: 1/500-1/1000 IHC: 1/50-1/100 IF: 1/50-1/200

Host Species: Rabbit

Clonality: Rabbit Monoclonal

Clone ID: R05-2C8

MW: Calculated MW: 33 kDa; Observed MW: 33 kDa

Isotype: IgG

Purification: Affinity Purified

Species Reactivity: Human,Mouse,Rat

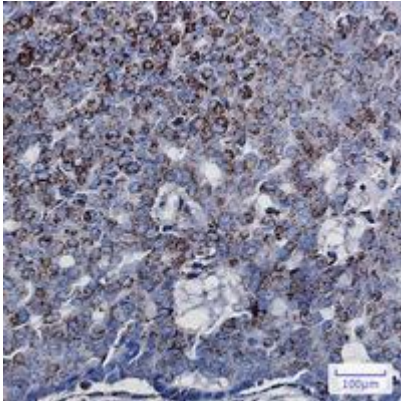
Conjugation: Unconjugated

Modification: Unmodified

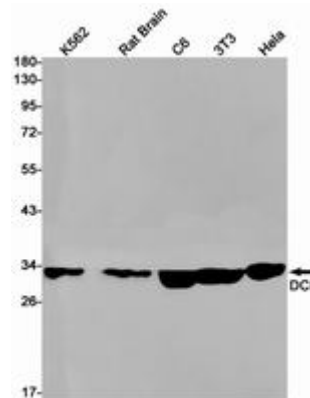
Constituents: PBS (without Mg²⁺ and Ca²⁺), pH 7.3 containing 50% glycerol, 0.5% BSA and 0.02% sodium azide

Research Areas: Tags & Cell Markers

Storage & Shipping: Store at -20°C. Avoid repeated freezing and thawing



Immunohistochemistry analysis of paraffin-embedded Human breast cancer using DCI antibody. High-pressure and temperature Sodium Citrate pH 6.0 was used for antigen retrieval.



Western blot analysis of DCI in K562, rat Brain, C6, 3T3, HeLa lysates using DCI antibody.