

## DCP1A RABBIT PAB

**Cat.#:** S217344

**Product Name:** Anti-DCP1A Rabbit Polyclonal Antibody

**Synonyms:** SMIF; SMAD4IP1; HSA275986; Nbla00360

**UNIPROT ID:** Q9NPI6 (Gene Accession - BC007439 )

**Background:** Decapping is a key step in general and regulated mRNA decay. The protein encoded by this gene is a decapping enzyme. This protein and another decapping enzyme form a decapping complex which interacts with the nonsense-mediated decay factor hUpf1 and may be recruited to mRNAs containing premature termination codons. This protein also participates in the TGF-beta signaling pathway.

**Immunogen:** Fusion protein of human DCP1A

**Applications:** ELISA, WB, IHC

**Recommended Dilutions:** IHC: 100-300;WB: 1000-5000;ELISA: 2000-10000

**Host Species:** Rabbit

**Clonality:** Rabbit Polyclonal

**Isotype:** Immunogen-specific rabbit IgG

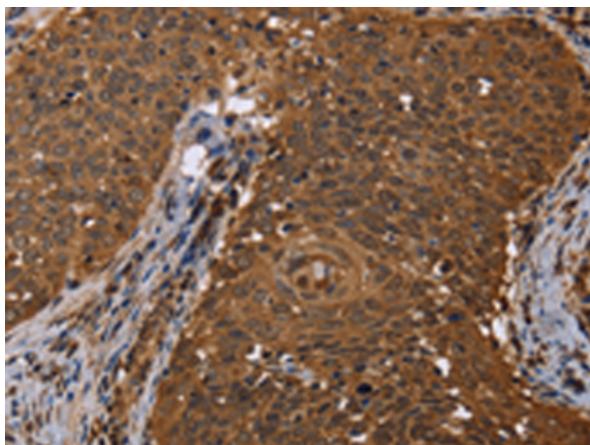
**Purification:** Antigen affinity purification

**Species Reactivity:** Human, Mouse

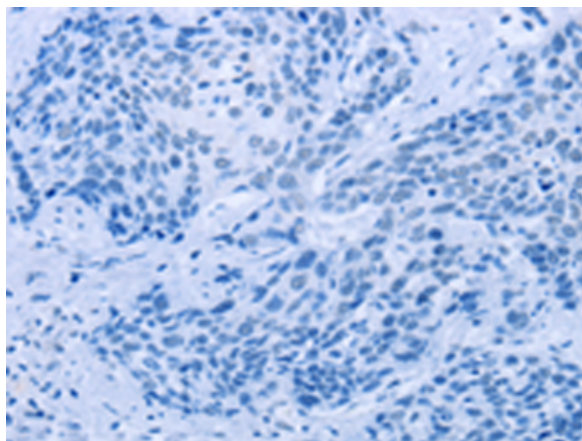
**Constituents:** PBS (without Mg<sup>2+</sup> and Ca<sup>2+</sup>), pH 7.4, 150 mM NaCl, 0.05% Sodium Azide and 40% glycerol

**Research Areas:** Epigenetics and Nuclear Signaling

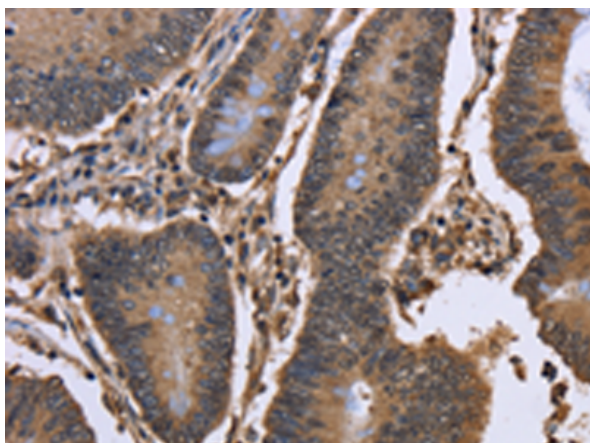
**Storage & Shipping:** Store at -20°C. Avoid repeated freezing and thawing



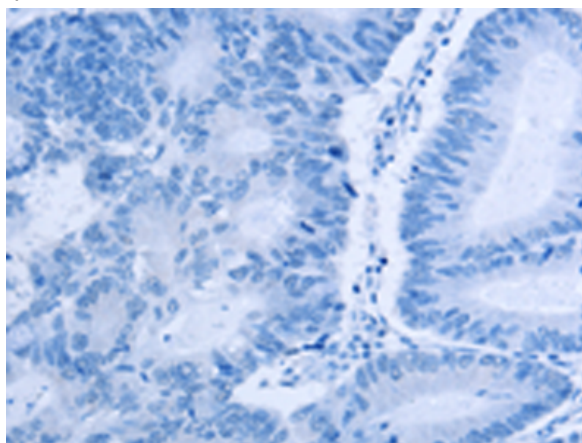
Immunohistochemistry analysis of paraffin embedded Human cervical cancer tissue using 217344(DCPIA Antibody) at a dilution of 1/50(Nucleus and Cytoplasm).



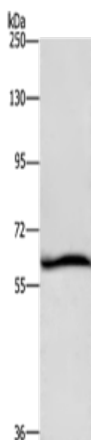
In comparison with the IHC on the left, the same paraffin-embedded Human cervical cancer tissue is first treated with the fusion protein and then with 217344(Anti-DCPIA Antibody) at dilution 1/50.



The image on the left is immunohistochemistry of paraffin-embedded Human colon cancer tissue using 217344(Anti-DCPIA Antibody) at a dilution of 1/50.



In comparison with the IHC on the left, the same paraffin-embedded Human colon cancer tissue is first treated with fusion protein and then with D222210(Anti-DCPIA Antibody) at dilution 1/50.



Gel: 6%SDS-PAGE, Lysate: 40 µg;  
Lane: HeLa cells;  
Primary antibody: 217344(DCPIA Antibody) at dilution 1/1100;  
Secondary antibody: Goat anti rabbit IgG at 1/8000 dilution;  
Exposure time: 10 seconds



# Product Description

Pioneering GTPase and Oncogene Product Development since 2010

---