

DCT RABBIT PAB

Cat.#: S216861

Product Name: Anti-DCT Rabbit Polyclonal Antibody

Synonyms: TRP-2; TYRP2

UNIPROT ID: P40126 (Gene Accession - BC028311)

Background: This protein can involved in regulating eumelanin and phaeomelanin levels. The subcellular location of this protein is melanosome membrane, Single-pass type I membrane protein. It may form a multienzyme complex together with Tyrosinase and TYRP1.

Immunogen: Fusion protein of human DCT

Applications: ELISA, IHC

Recommended Dilutions: IHC: 25-100; ELISA: 2000-5000

Host Species: Rabbit

Clonality: Rabbit Polyclonal

Isotype: Immunogen-specific rabbit IgG

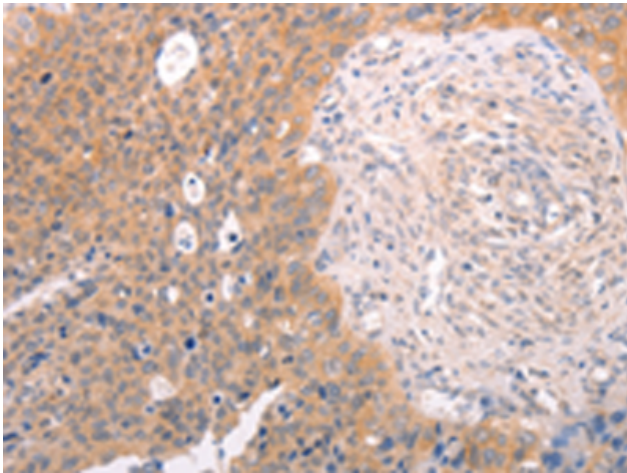
Purification: Antigen affinity purification

Species Reactivity: Human, Mouse

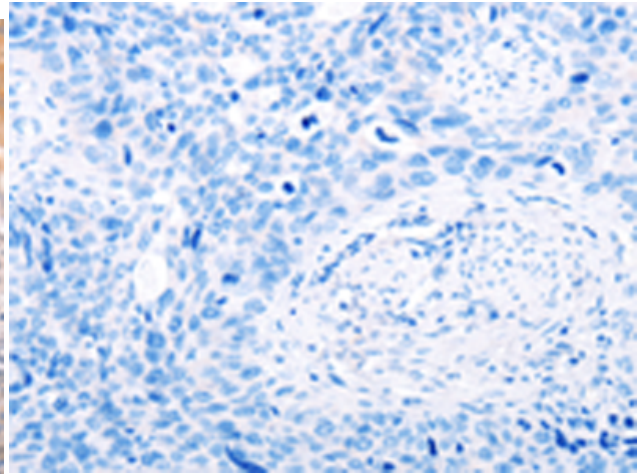
Constituents: PBS (without Mg²⁺ and Ca²⁺), pH 7.4, 150 mM NaCl, 0.05% Sodium Azide and 40% glycerol

Research Areas: Metabolism, Cancer, Cell Biology

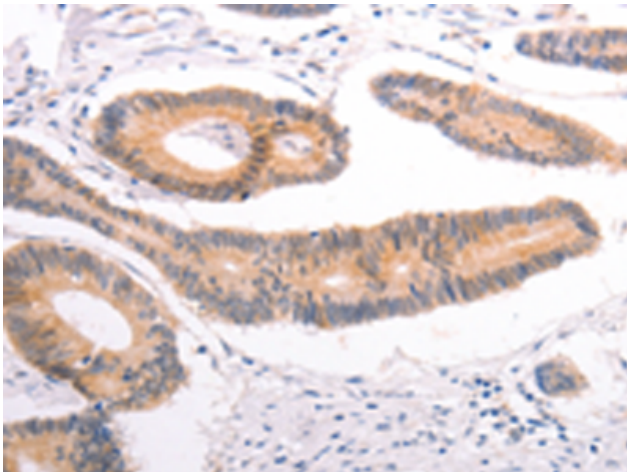
Storage & Shipping: Store at -20°C. Avoid repeated freezing and thawing



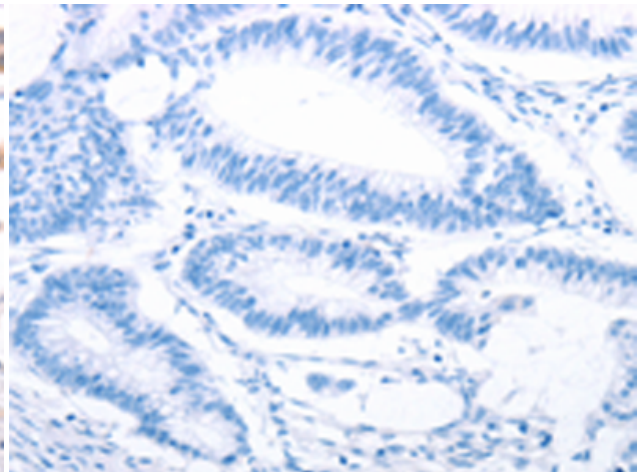
Immunohistochemistry analysis of paraffin-embedded Human cervical cancer tissue using 216861 (DCT Antibody) at a dilution of 1/25 (Cytoplasm).



In comparison with the IHC on the left, the same paraffin-embedded Human cervical cancer tissue is first treated with the fusion protein and then with 216861 (Anti-DCT Antibody) at dilution 1/25.



The image on the left is immunohistochemistry of paraffin-embedded Human colon cancer tissue using 216861 (Anti-DCT Antibody) at a dilution of 1/25.



In comparison with the IHC on the left, the same paraffin-embedded Human colon cancer tissue is first treated with fusion protein and then with D221374 (Anti-DCT Antibody) at dilution 1/25.