

## DDA1 RABBIT PAB

**Cat.#:** S218582

**Product Name:** Anti-DDA1 Rabbit Polyclonal Antibody

**Synonyms:** PCIA1; C19orf58

**UNIPROT ID:** Q9BW61 (Gene Accession - BC000615 )

**Background:** May be involved in ubiquitination and subsequent proteasomal degradation of target proteins. Component of the DDD-E2 complexes which may provide a platform for interaction with CUL4A and WD repeat proteins.

**Immunogen:** Full length fusion protein

**Applications:** ELISA, IHC

**Recommended Dilutions:** IHC: 20-100; ELISA: 5000-10000

**Host Species:** Rabbit

**Clonality:** Rabbit Polyclonal

**Isotype:** Immunogen-specific rabbit IgG

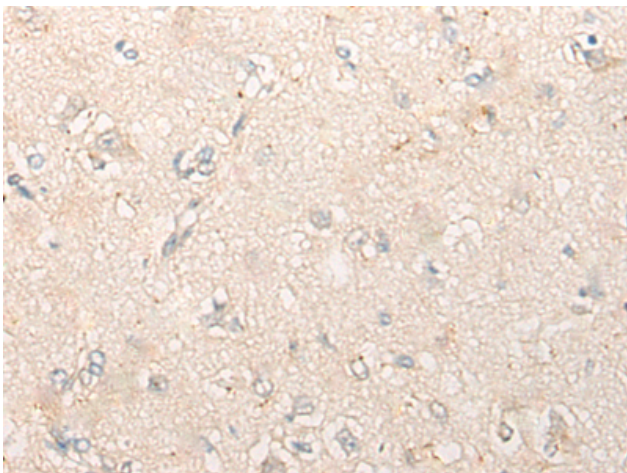
**Purification:** Antigen affinity purification

**Species Reactivity:** Human, Mouse

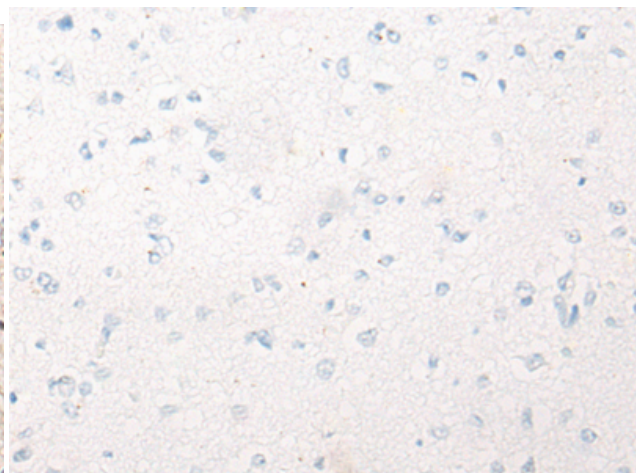
**Constituents:** PBS (without Mg<sup>2+</sup> and Ca<sup>2+</sup>), pH 7.4, 150 mM NaCl, 0.05% Sodium Azide and 40% glycerol

**Research Areas:** Cell Biology

**Storage & Shipping:** Store at -20°C. Avoid repeated freezing and thawing



Immunohistochemistry analysis of paraffin embedded Human brain tissue using 218582 (DDA1 Antibody) at a dilution of 1/20 (Cytoplasm).



In comparison with the IHC on the left, the same paraffin-embedded Human brain tissue is first treated with the fusion protein and then with 218582 (Anti-DDA1 Antibody) at dilution 1/20.