

DDAH2 RABBIT PAB

Cat.#: S220496

Product Name: Anti-DDAH2 Rabbit Polyclonal Antibody

Synonyms: G6a; DDAH; NG30; DDAHII

UNIPROT ID: O95865 (Gene Accession - NP_039268)

Background: This gene belongs to the dimethylarginine dimethylaminohydrolase (DDAH) gene family. The encoded enzyme plays a role in nitric oxide generation by regulating cellular concentrations of methylarginines, which in turn inhibit nitric oxide synthase activity.

Immunogen: Synthetic peptide of human DDAH2

Applications: ELISA, WB, IHC

Recommended Dilutions: IHC: 25-100;WB: 200-1000;ELISA: 1000-2000

Host Species: Rabbit

Clonality: Rabbit Polyclonal

Isotype: Immunogen-specific rabbit IgG

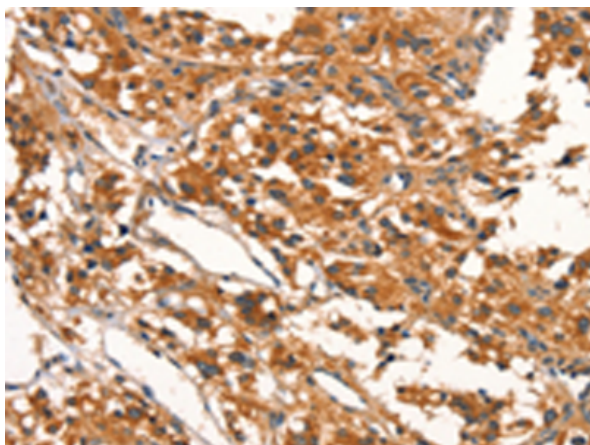
Purification: Antigen affinity purification

Species Reactivity: Human, Mouse, Rat

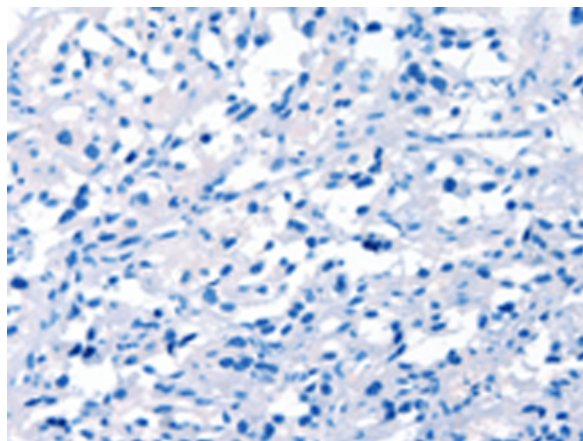
Constituents: PBS (without Mg²⁺ and Ca²⁺), pH 7.4, 150 mM NaCl, 0.05% Sodium Azide and 40% glycerol

Research Areas: Neuroscience

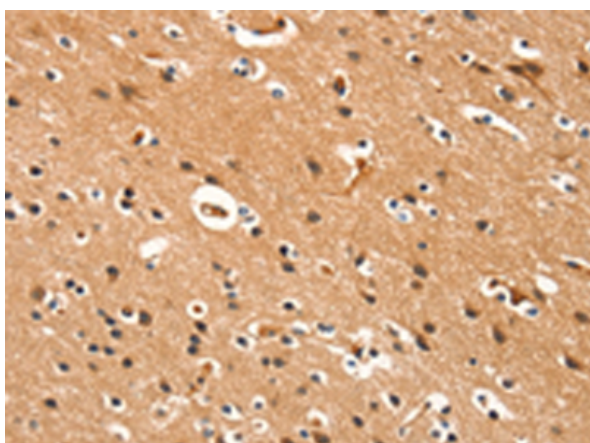
Storage & Shipping: Store at -20°C. Avoid repeated freezing and thawing



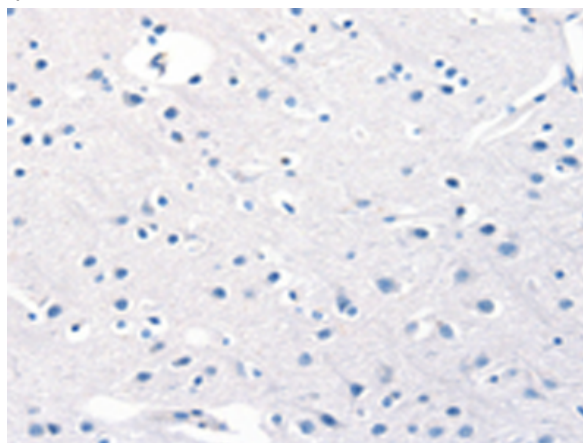
Immunohistochemistry analysis of paraffin embedded Human thyroid cancer tissue using 220496(DDAH2 Antibody) at a dilution of 1/15(Cytoplasm).



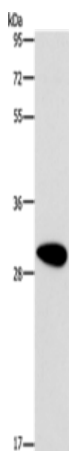
In comparison with the IHC on the left, the same paraffin-embedded Human thyroid cancer tissue is first treated with the synthetic peptide and then with 220496(Anti-DDAH2 Antibody) at dilution 1/15.



The image on the left is immunohistochemistry of paraffin-embedded Human brain tissue using 220496(Anti-DDAH2 Antibody) at a dilution of 1/15.



In comparison with the IHC on the left, the same paraffin-embedded Human brain tissue is first treated with synthetic peptide and then with D261609(Anti-DDAH2 Antibody) at dilution 1/15.



Gel: 10%SDS-PAGE, Lysate: 40 µg;
Lane: Human fetal brain tissue;
Primary antibody: 220496(DDAH2 Antibody) at dilution 1/300;
Secondary antibody: Goat anti rabbit IgG at 1/8000 dilution;
Exposure time: 30 seconds



Product Description

Pioneering GTPase and Oncogene Product Development since 2010
