

DDB1 RABBIT MAB

Cat.#: N263298

Product Name: Anti-DDB1 Rabbit Monoclonal Antibody

Synonyms: XPE; DDBA; XAP1; XPCE; XPE-BF; UV-DDB1

UNIPROT ID: Q16531

Background: Required for DNA repair. Binds to DDB2 to form the UV-damaged DNA-binding protein complex (the UV-DDB complex). The UV-DDB complex may recognize UV-induced DNA damage and recruit proteins of the nucleotide excision repair pathway (the NER pathway) to initiate DNA repair.

Immunogen: A synthetic peptide of human DDB1

Applications: WB,IHC-F,IHC-P,ICC/IF,IP

Recommended Dilutions: WB: 1/500-1/1000 IHC: 1/50-1/100 IF: 1/50-1/200 IP: 1/20

Host Species: Rabbit

Clonality: Rabbit Monoclonal

Clone ID: R07-2A3

MW: Calculated MW: 127 kDa; Observed MW: 127 kDa

Isotype: IgG

Purification: Affinity Purified

Species Reactivity: Human,Mouse

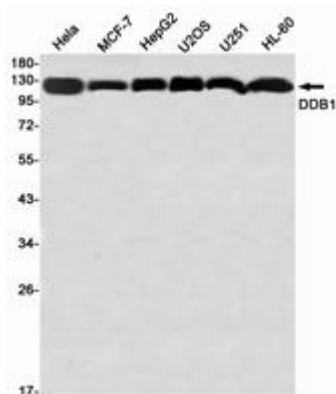
Conjugation: Unconjugated

Modification: Unmodified

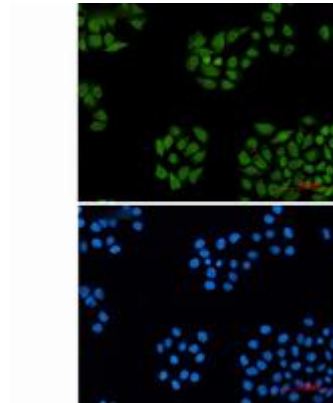
Constituents: PBS (without Mg²⁺ and Ca²⁺), pH 7.3 containing 50% glycerol, 0.5% BSA and 0.02% sodium azide

Research Areas: Epigenetics and Nuclear Signaling

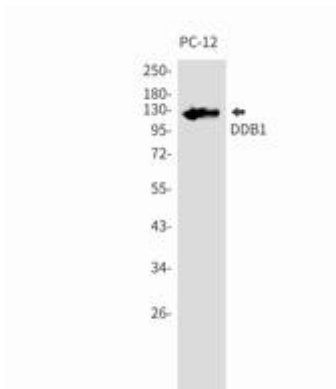
Storage & Shipping: Store at -20°C. Avoid repeated freezing and thawing



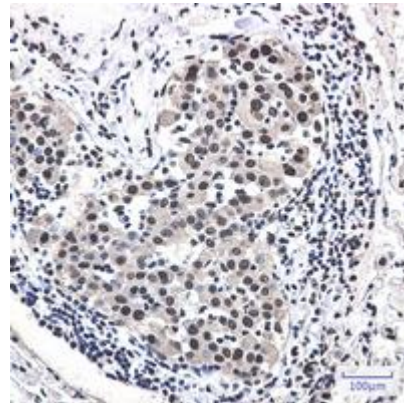
Western blot analysis of DDB1 in HeLa, MCF-7, HepG2, U2OS, U251, HL-60 lysates using DDB1 antibody



Immunocytochemistry analysis of DDB1 (green) in HeLa using DDB1 antibody, and DAPI (blue).



Western blot analysis of DDB1 in PC-12 lysates using DDB1 antibody.



Immunohistochemistry analysis of paraffin-embedded Human lung cancer using DDB1 antibody. High-pressure and temperature Sodium Citrate pH 6.0 was used for antigen retrieval.