

## DDB1 RABBIT PAB

**Cat.#:** S219738

**Product Name:** Anti-DDB1 Rabbit Polyclonal Antibody

**Synonyms:** XPE, DDBA, XAPI, XPCE, XPE-BF, UV-DDB1

**UNIPROT ID:** Q16531 (Gene Accession - NP\_001914 )

**Background:** The protein encoded by this gene is the large subunit (p127) of the heterodimeric DNA damage-binding (DDB) complex while another protein (p48) forms the small subunit. This protein complex functions in nucleotide-excision repair and binds to DNA following UV damage. Defective activity of this complex causes the repair defect in patients with xeroderma pigmentosum complementation group E (XPE) - an autosomal recessive disorder characterized by photosensitivity and early onset of carcinomas. However, it remains for mutation analysis to demonstrate whether the defect in XPE patients is in this gene or the gene encoding the small subunit. In addition, Best vitelliform macular dystrophy is mapped to the same region as this gene on 11q, but no sequence alternations of this gene are demonstrated in Best disease patients. The protein encoded by this gene also functions as an adaptor molecule for the cullin 4 (CUL4) ubiquitin E3 ligase complex by facilitating the binding of substrates to this complex and the ubiquitination of proteins.

**Immunogen:** Synthetic peptide of human DDB1

**Applications:** ELISA, WB, IHC

**Recommended Dilutions:** IHC: 10-100;WB: 200-1000;ELISA: 500-5000

**Host Species:** Rabbit

**Clonality:** Rabbit Polyclonal

**Isotype:** Immunogen-specific rabbit IgG

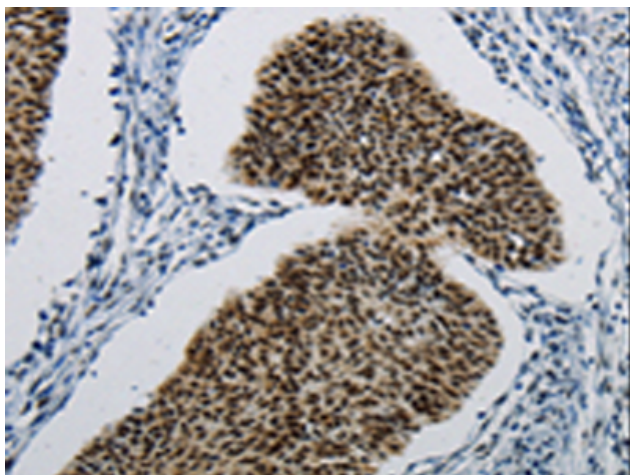
**Purification:** Antigen affinity purification

**Species Reactivity:** Human, Mouse, Rat

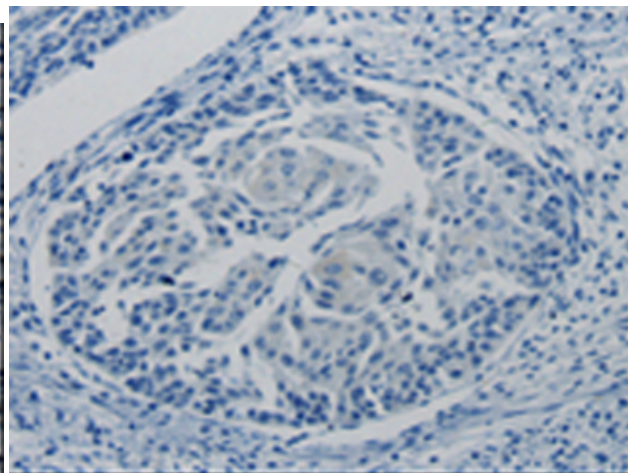
**Constituents:** PBS (without Mg<sup>2+</sup> and Ca<sup>2+</sup>), pH 7.4, 150 mM NaCl, 0.05% Sodium Azide and 40% glycerol

**Research Areas:** Epigenetics and Nuclear Signaling

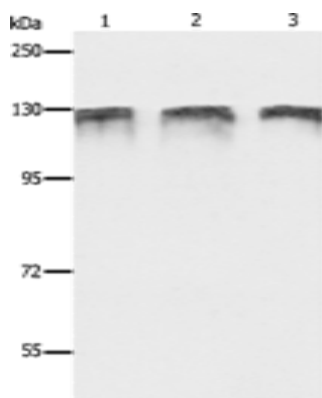
**Storage & Shipping:** Store at -20°C. Avoid repeated freezing and thawing



Immunohistochemistry analysis of paraffin embedded Human cervical cancer tissue using 219738(DDB1 Antibody) at a dilution of 1/5(Cytoplasm, Nucleus).



In comparison with the IHC on the left, the same paraffin-embedded Human cervical cancer tissue is first treated with the synthetic peptide and then with 219738(Anti-DDB1 Antibody) at dilution 1/5.



Gel: 8%SDS-PAGE, Lysate: 40  $\mu$ g;  
Lane 1-3: MCF7 cells, HeLa cells, HepG2 cells;  
Primary antibody: 219738(DDB1 Antibody) at dilution 1/350;  
Secondary antibody: Goat anti rabbit IgG at 1/8000 dilution;  
Exposure time: 1 minute