

DDX27 RABBIT PAB

Cat.#: S212306

Product Name: Anti-DDX27 Rabbit Polyclonal Antibody

Synonyms: DRS1; RHP; Drs1p; PP3241; HSPC259; dJ686N3.1

UNIPROT ID: Q96GQ7 (Gene Accession - BC011927)

Background: DEAD box proteins, characterized by the conserved motif Asp-Glu-Ala-Asp (DEAD), are putative RNA helicases. They are implicated in a number of cellular processes involving alteration of RNA secondary structure such as translation initiation, nuclear and mitochondrial splicing, and ribosome and spliceosome assembly. Based on their distribution patterns, some members of this family are believed to be involved in embryogenesis, spermatogenesis, and cellular growth and division. This gene encodes a DEAD box protein, the function of which has not been determined.

Immunogen: Fusion protein of human DDX27

Applications: ELISA, WB, IHC

Recommended Dilutions: IHC: 20-100;WB: 200-1000;ELISA: 5000-10000

Host Species: Rabbit

Clonality: Rabbit Polyclonal

Isotype: Immunogen-specific rabbit IgG

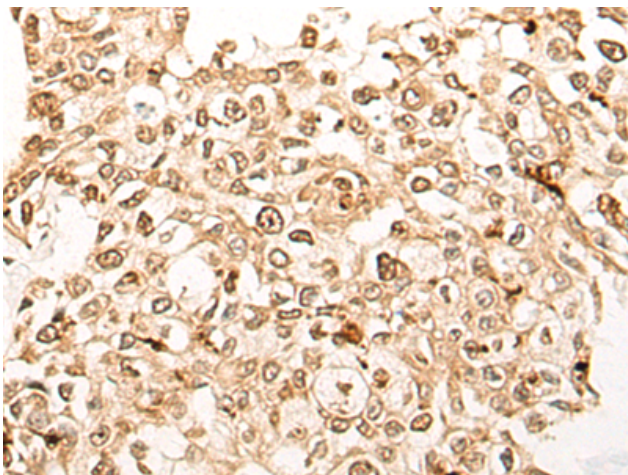
Purification: Antigen affinity purification

Species Reactivity: Human, Mouse

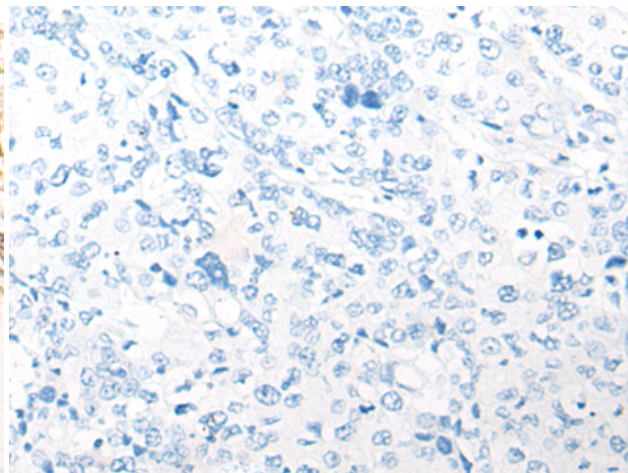
Constituents: PBS (without Mg²⁺ and Ca²⁺), pH 7.4, 150 mM NaCl, 0.05% Sodium Azide and 40% glycerol

Research Areas: Epigenetics and Nuclear Signaling

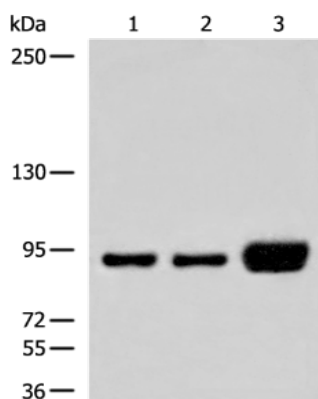
Storage & Shipping: Store at -20°C. Avoid repeated freezing and thawing



Immunohistochemistry analysis of paraffin embedded Human prostate cancer tissue using 212306 (DDX27 Antibody) at a dilution of 1/20 (Nucleus and Cytoplasm).



In comparison with the IHC on the left, the same paraffin-embedded Human prostate cancer tissue is first treated with the fusion protein and then with 212306 (Anti-DDX27 Antibody) at dilution 1/20.



Gel: 6%SDS-PAGE, Lysate: 40 μ g;
Lane 1-3: HEPG2, HeLa and K562 cell lysates;
Primary antibody: 212306 (DDX27 Antibody) at dilution 1/250;
Secondary antibody: Goat anti rabbit IgG at 1/8000 dilution;
Exposure time: 2 seconds