

DDX39B RABBIT PAB

Cat.#: S221071

Product Name: Anti-DDX39B Rabbit Polyclonal Antibody

Synonyms: BAT1; UAP56; D6S81E

UNIPROT ID: Q13838 (Gene Accession - NP_004631)

Background: This gene encodes a member of the DEAD box family of RNA-dependent ATPases that mediate ATP hydrolysis during pre-mRNA splicing. The encoded protein is an essential splicing factor required for association of U2 small nuclear ribonucleoprotein with pre-mRNA, and it also plays an important role in mRNA export from the nucleus to the cytoplasm. This gene belongs to a cluster of genes localized in the vicinity of the genes encoding tumor necrosis factor alpha and tumor necrosis factor beta.

Immunogen: Synthetic peptide of human DDX39B

Applications: ELISA, WB, IHC

Recommended Dilutions: IHC: 30-150;WB: 500-2000;ELISA: 2000-5000

Host Species: Rabbit

Clonality: Rabbit Polyclonal

Isotype: Immunogen-specific rabbit IgG

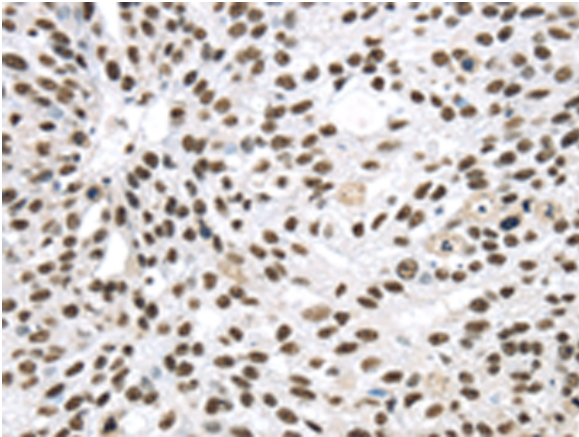
Purification: Antigen affinity purification

Species Reactivity: Human, Mouse, Rat

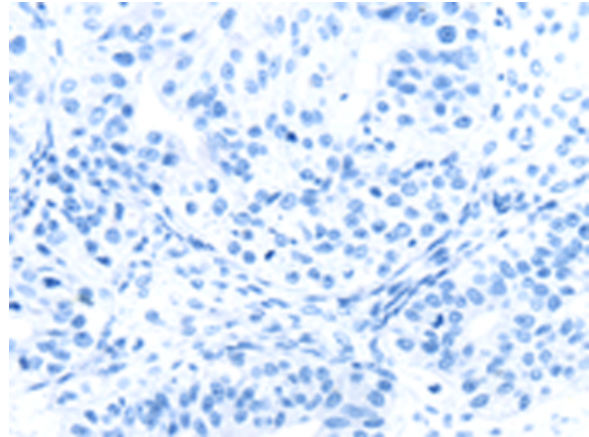
Constituents: PBS (without Mg²⁺ and Ca²⁺), pH 7.4, 150 mM NaCl, 0.05% Sodium Azide and 40% glycerol

Research Areas: Epigenetics and Nuclear Signaling

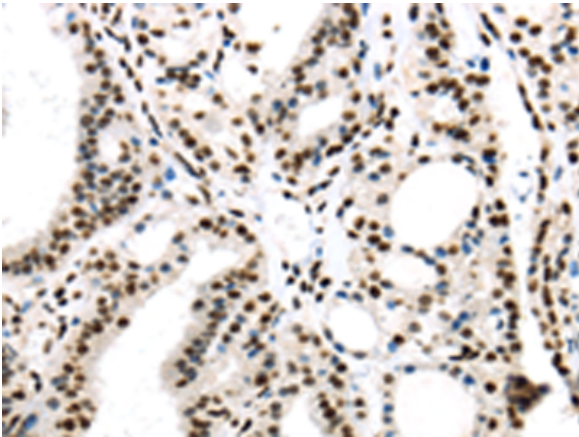
Storage & Shipping: Store at -20°C. Avoid repeated freezing and thawing



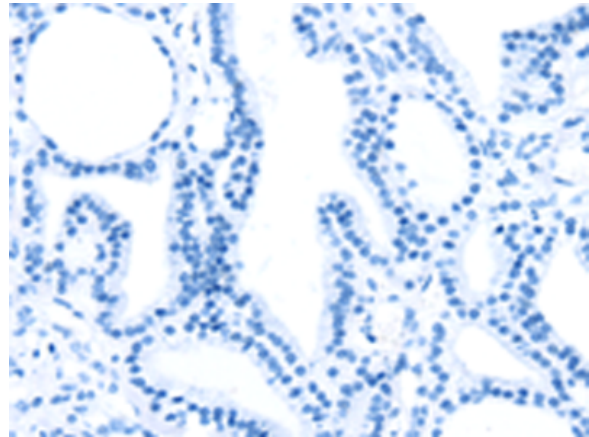
Immunohistochemistry analysis of paraffin embedded Human breast cancer tissue using 221071(DDX39B Antibody) at a dilution of 1/40(Nucleus).



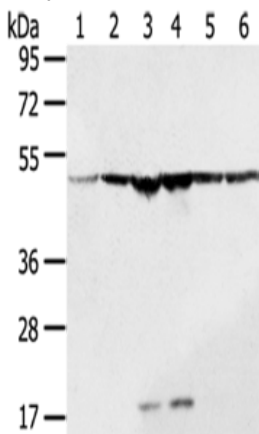
In comparison with the IHC on the left, the same paraffin-embedded Human breast cancer tissue is first treated with the synthetic peptide and then with 221071(Anti-DDX39B Antibody) at dilution 1/40.



The image on the left is immunohistochemistry of paraffin-embedded Human thyroid cancer tissue using 221071(Anti-DDX39B Antibody) at a dilution of 1/40.



In comparison with the IHC on the left, the same paraffin-embedded Human thyroid cancer tissue is first treated with synthetic peptide and then with D262439(Anti-DDX39B Antibody) at dilution 1/40.



Gel: 8%SDS-PAGE, Lysate: 40 µg;
 Lane 1-6: A431 cells, SKOV3 cells, 231 cells, Jurkat cells, HepG2 cells, Hela cells;
 Primary antibody: 221071(DDX39B Antibody) at dilution 1/200;
 Secondary antibody: Goat anti rabbit IgG at 1/8000 dilution;
 Exposure time: 1 second



Product Description

Pioneering GTPase and Oncogene Product Development since 2010
