

DDX5 RABBIT MAB

Cat.#: N262124

Product Name: Anti-DDX5 Rabbit Monoclonal Antibody

Synonyms: DDX5; G17P1; HELR; HLRI; Probable ATP-dependent RNA helicase DDX5; DEAD box protein 5; RNA helicase p68

UNIPROT ID: P17844

Background: RNA-dependent ATPase activity. The rate of ATP hydrolysis is highly stimulated by single-stranded RNA. May be involved in pre-mRNA splicing.

Immunogen: A synthetic peptide of human DDX5

Applications: WB,IHC-F,IHC-P,ICC/IF,IP

Recommended Dilutions: WB: 1/500-1/1000 IHC: 1/50-1/100 IF: 1/50-1/200 IP: 1/20

Host Species: Rabbit

Clonality: Rabbit Monoclonal

Clone ID: R04-2K2

MW: Calculated MW: 69 kDa; Observed MW: 69 kDa

Isotype: IgG

Purification: Affinity Purified

Species Reactivity: Human,Mouse,Rat

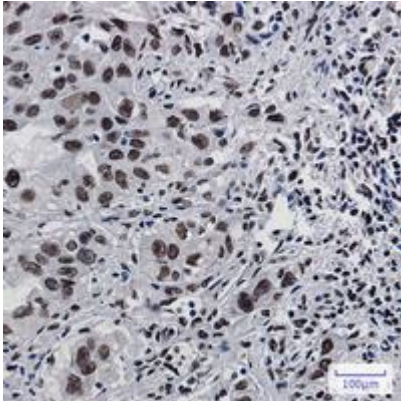
Conjugation: Unconjugated

Modification: Unmodified

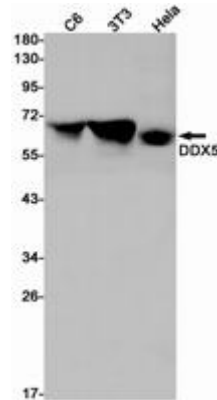
Constituents: PBS (without Mg²⁺ and Ca²⁺), pH 7.3 containing 50% glycerol, 0.5% BSA and 0.02% sodium azide

Research Areas: Epigenetics and Nuclear Signaling

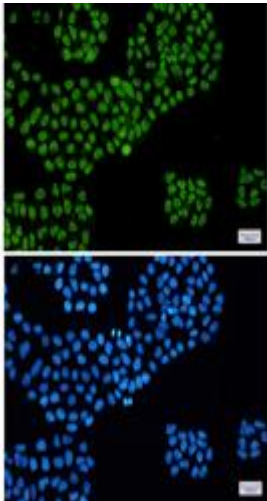
Storage & Shipping: Store at -20°C. Avoid repeated freezing and thawing



Immunohistochemistry analysis of paraffin-embedded Human lung cancer using DDX5 antibody. High-pressure and temperature Sodium Citrate pH 6.0 was used for antigen retrieval.



Western blot analysis of DDX5 in C6, 3T3, Hela lysates using DDX5 antibody.



Immunocytochemistry analysis of DDX5 (green) in Hela using DDX5 antibody, and DAPI (blue)