

## DECRI RABBIT PAB

**Cat.#:** S220499

**Product Name:** Anti-DECRI Rabbit Polyclonal Antibody

**Synonyms:** DECR; NADPH; SDR18C1

**UNIPROT ID:** Q16698 (Gene Accession - NP\_001350 )

**Background:** This gene encodes an accessory enzyme which participates in the beta-oxidation and metabolism of unsaturated fatty enoyl-CoA esters. Auxiliary enzyme of beta-oxidation. It participates in the metabolism of unsaturated fatty enoyl-CoA esters having double bonds in both even- and odd-numbered positions. Catalyzes the NADP-dependent reduction of 2,4-dienoyl-CoA to yield trans-3-enoyl-CoA.

**Immunogen:** Synthetic peptide of human DECRI

**Applications:** ELISA, WB, IHC

**Recommended Dilutions:** IHC: 25-100;WB: 500-2000;ELISA: 2000-5000

**Host Species:** Rabbit

**Clonality:** Rabbit Polyclonal

**Isotype:** Immunogen-specific rabbit IgG

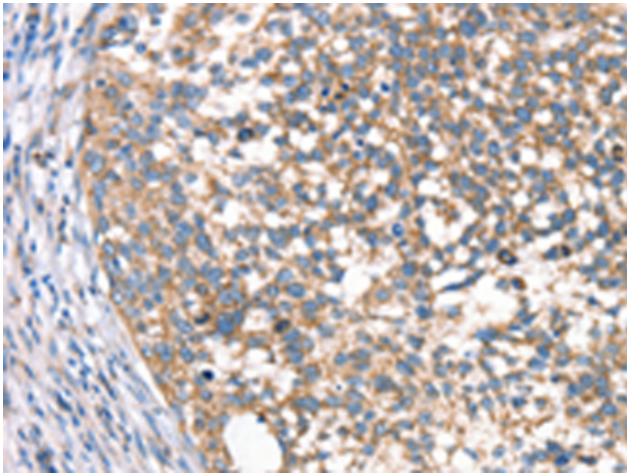
**Purification:** Antigen affinity purification

**Species Reactivity:** Human, Mouse, Rat

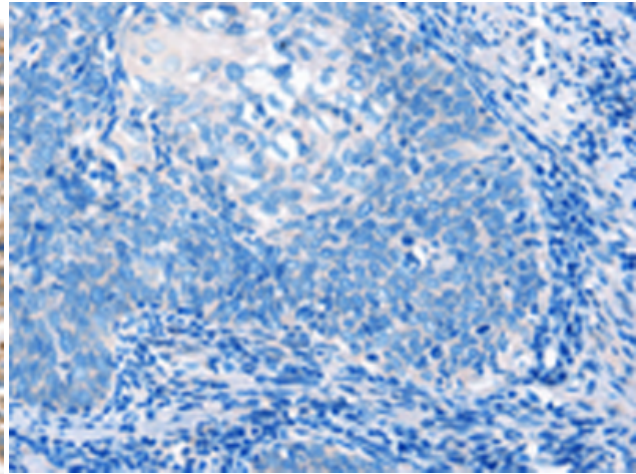
**Constituents:** PBS (without Mg<sup>2+</sup> and Ca<sup>2+</sup>), pH 7.4, 150 mM NaCl, 0.05% Sodium Azide and 40% glycerol

**Research Areas:** Metabolism, Cancer

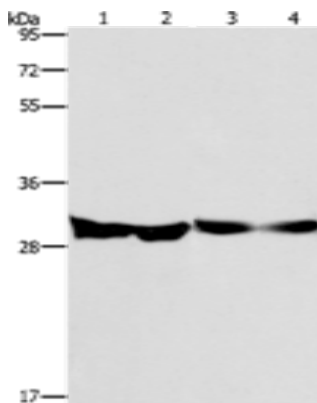
**Storage & Shipping:** Store at -20°C. Avoid repeated freezing and thawing



Immunohistochemistry analysis of paraffin embedded Human cervical cancer tissue using 220499(DECRI Antibody) at a dilution of 1/40(Cytoplasm).



In comparison with the IHC on the left, the same paraffin-embedded Human cervical cancer tissue is first treated with the synthetic peptide and then with 220499(Anti-DECRI Antibody) at dilution 1/40.



Gel: 8%SDS-PAGE, Lysate: 40  $\mu$ g;  
 Lane 1-4: Human endometrial carcinoma tissue, Human colon cancer tissue, mouse heart tissue, PC3 cells;  
 Primary antibody: 220499(DECRI Antibody) at dilution 1/300;  
 Secondary antibody: Goat anti rabbit IgG at 1/8000 dilution;  
 Exposure time: 10 seconds