

DECTIN-2 RABBIT PAB

Cat.#: N225078

Product Name: Anti-Dectin-2 Rabbit pAb

Synonyms: Dectin-2; CLEC6A; CLECSF10; DECTIN2; C-type lectin domain family 6 member A; C-type lectin superfamily member 10; Dendritic cell-associated C-type lectin 2; DC-associated C-type lectin 2; Dectin-2

UNIPROT ID: Q6EIG7

Background: Like dectin-1 (CLEC7A; MIM 606264), CLEC6A, or dectin-2, is a type II membrane receptor with an extracellular C-type lectin-like domain fold. However, unlike dectin-1, dectin-2 lacks an immunoreceptor tyrosine-based activation motif (ITAM) in its cytoplasmic domain

Immunogen: Synthesized peptide derived from the Internal region of human Dectin-2.

Applications: WB,IHC-P,ELISA

Recommended Dilutions: WB: 1/500-1/1000 IHC: 1/50-1/100 ELISA: 1/10000

Host Species: Rabbit

Clonality: Rabbit Polyclonal

Clone ID: -

MW: Calculated MW: 24 kDa; Observed MW: 24 kDa

Isotype: IgG

Purification: Affinity Purified

Species Reactivity: Human

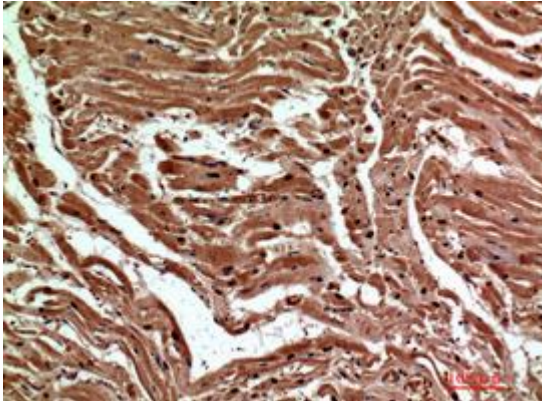
Conjugation: Unconjugated

Modification: Unmodified

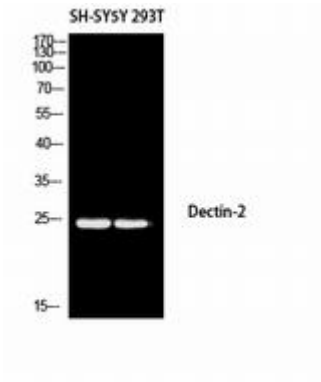
Constituents: PBS (without Mg²⁺ and Ca²⁺), pH 7.3 containing 50% glycerol, 0.5% BSA and 0.02% sodium azide

Research Areas: Immunology

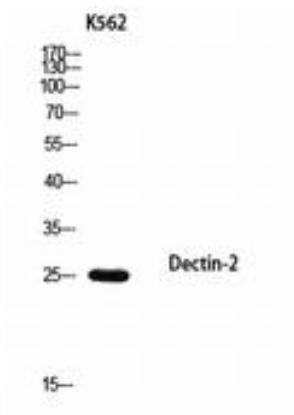
Storage & Shipping: Store at -20°C. Avoid repeated freezing and thawing



Immunohistochemistry analysis of paraffin-embedded Human heart using Dectin-2 antibody. High-pressure and temperature Sodium Citrate pH 6.0 was used for antigen retrieval.



Western blot analysis of Dectin-2 in SH-SY5Y, 293T lysates using Dectin-2 antibody.



Western blot analysis of Dectin-2 in K562 lysates using Dectin-2 antibody.