

## DEFA1 RABBIT PAB

**Cat.#:** S219739

**Product Name:** Anti-DEFA1 Rabbit Polyclonal Antibody

**Synonyms:** HP1, MRS, DEF1, HP-1, DEFA2, HNP-1

**UNIPROT ID:** P59665 (Gene Accession - NP\_004075 )

**Background:** Defensins are a family of microbicidal and cytotoxic peptides thought to be involved in host defense. They are abundant in the granules of neutrophils and also found in the epithelia of mucosal surfaces such as those of the intestine, respiratory tract, urinary tract, and vagina. Members of the defensin family are highly similar in protein sequence and distinguished by a conserved cysteine motif. The protein encoded by this gene, defensin, alpha 1, is found in the microbicidal granules of neutrophils and likely plays a role in phagocyte-mediated host defense. Several alpha defensin genes are clustered on chromosome 8. This gene differs from defensin, alpha 3 by only one amino acid. This gene and the gene encoding defensin, alpha 3 are both subject to copy number variation.

**Immunogen:** Synthetic peptide of human DEFA1

**Applications:** ELISA, IHC

**Recommended Dilutions:** IHC: 20-May; ELISA: 500-5000

**Host Species:** Rabbit

**Clonality:** Rabbit Polyclonal

**Isotype:** Immunogen-specific rabbit IgG

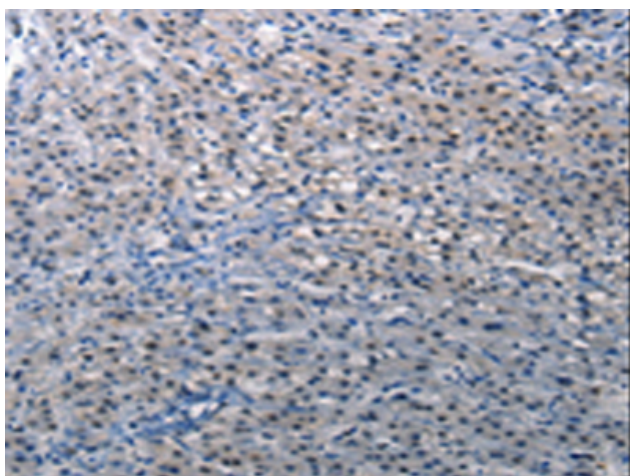
**Purification:** Antigen affinity purification

**Species Reactivity:** Human

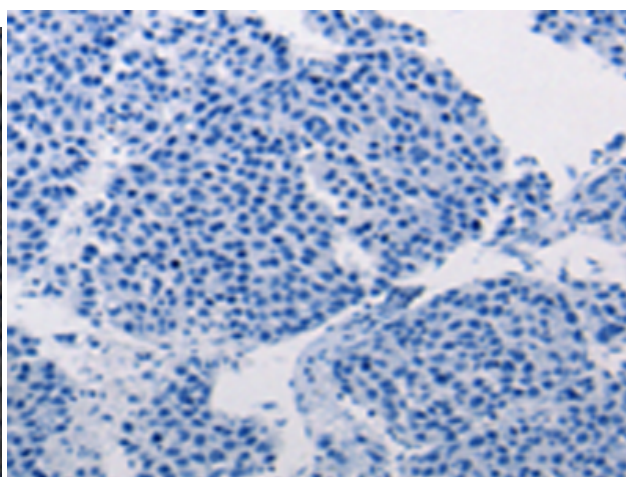
**Constituents:** PBS (without Mg<sup>2+</sup> and Ca<sup>2+</sup>), pH 7.4, 150 mM NaCl, 0.05% Sodium Azide and 40% glycerol

**Research Areas:** Immunology

**Storage & Shipping:** Store at -20°C. Avoid repeated freezing and thawing



Immunohistochemistry analysis of paraffin embedded Human liver cancer tissue using 219739(DEF1 Antibody) at a dilution of 1/10(Cytoplasm).



In comparison with the IHC on the left, the same paraffin-embedded Human liver cancer tissue is first treated with the synthetic peptide and then with 219739(Anti-DEF1 Antibody) at dilution 1/10.



# Product Description

Pioneering GTPase and Oncogene Product Development since 2010

---