

DEK RABBIT MAB

Cat.#: N262125

Product Name: Anti-DEK Rabbit Monoclonal Antibody

Synonyms: Dek; DEK oncogene; Protein DEK

UNIPROT ID: P35659

Background: Involved in chromatin organization.

Immunogen: Recombinant protein of human DEK

Applications: WB,IHC-P,IP

Recommended Dilutions: WB: 1/500-1/1000 IHC: 1/50-1/100 IP: 1/20

Host Species: Rabbit

Clonality: Rabbit Monoclonal

Clone ID: R06-5D2

MW: Calculated MW: 43 kDa; Observed MW: 50 kDa

Isotype: IgG

Purification: Affinity Purified

Species Reactivity: Human

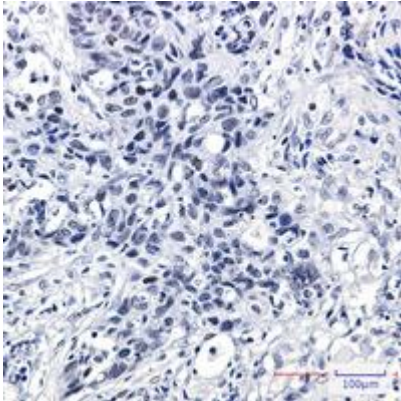
Conjugation: Unconjugated

Modification: Unmodified

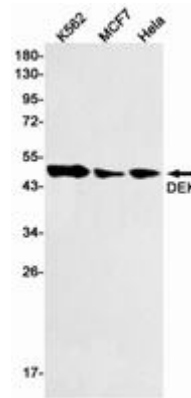
Constituents: PBS (without Mg²⁺ and Ca²⁺), pH 7.3 containing 50% glycerol, 0.5% BSA and 0.02% sodium azide

Research Areas: Epigenetics and Nuclear Signaling

Storage & Shipping: Store at -20°C. Avoid repeated freezing and thawing



Immunohistochemistry analysis of paraffin-embedded Human lung cancer using DEK antibody. High-pressure and temperature Sodium Citrate pH 6.0 was used for antigen retrieval.



Western blot analysis of DEK in K562, MCF-7, HeLa lysates using DEK antibody.