

## DENN RABBIT MAB

**Cat.#:** N263299

**Product Name:** Anti-DENN Rabbit Monoclonal Antibody

**Synonyms:** DENN; IG20; RAB3GEP

**UNIPROT ID:** Q8WXG6

**Background:** Guanyl-nucleotide exchange factor that regulates small GTPases of the Rab family.

**Immunogen:** A synthetic peptide of human DENN

**Applications:** WB,IHC-F,IHC-P,ICC/IF

**Recommended Dilutions:** WB: 1/500-1/1000 IHC: 1/50-1/100 IF: 1/50-1/200

**Host Species:** Rabbit

**Clonality:** Rabbit Monoclonal

**Clone ID:** R03-8F0

**MW:** Calculated MW: 183 kDa; Observed MW: 220 kDa

**Isotype:** IgG

**Purification:** Affinity Purified

**Species Reactivity:** Human

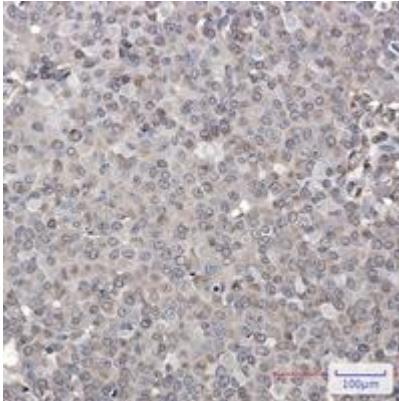
**Conjugation:** Unconjugated

**Modification:** Unmodified

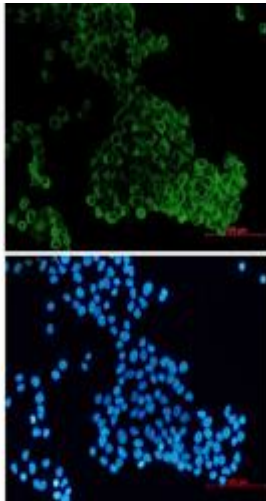
**Constituents:** PBS (without Mg<sup>2+</sup> and Ca<sup>2+</sup>), pH 7.3 containing 50% glycerol, 0.5% BSA and 0.02% sodium azide

**Research Areas:** -

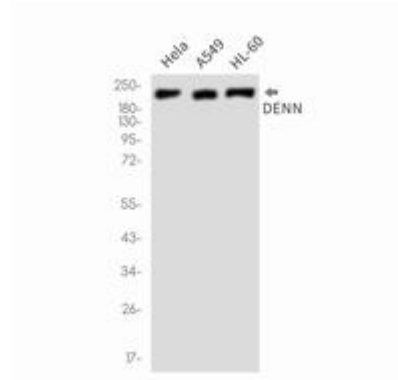
**Storage & Shipping:** Store at -20°C. Avoid repeated freezing and thawing



Immunohistochemistry analysis of paraffin-embedded Human breast cancer using DENN antibody. High-pressure and temperature Sodium Citrate pH 6.0 was used for antigen retrieval.



Immunocytochemistry analysis of DENN (green) in HeLa using DENN antibody, and DAPI (blue)



Western blot analysis of DENN in HeLa, A549, HL-60 lysates using DENN antibody.