

DENND1B RABBIT PAB

Cat.#: S218603

Product Name: Anti-DENND1B Rabbit Polyclonal Antibody

Synonyms: FAM31B; Clorf18; Clorf218

UNIPROT ID: Q6P3S1 (Gene Accession - BC022561)

Background: Clathrin (see MIM 118955)-mediated endocytosis is a major mechanism for internalization of proteins and lipids. Members of the connectin family, such as DENND1B, function as guanine nucleotide exchange factors (GEFs) for the early endosomal small GTPase RAB35 (MIM 604199) and bind to clathrin and clathrin adaptor protein-2 (AP2; see MIM 601024). Thus, connectins link RAB35 activation with the clathrin machinery (Marat and McPherson, 2010 [PubMed 20154091]).

Immunogen: Fusion protein of human DENND1B

Applications: ELISA, IHC

Recommended Dilutions: IHC: 50-200; ELISA: 5000-10000

Host Species: Rabbit

Clonality: Rabbit Polyclonal

Isotype: Immunogen-specific rabbit IgG

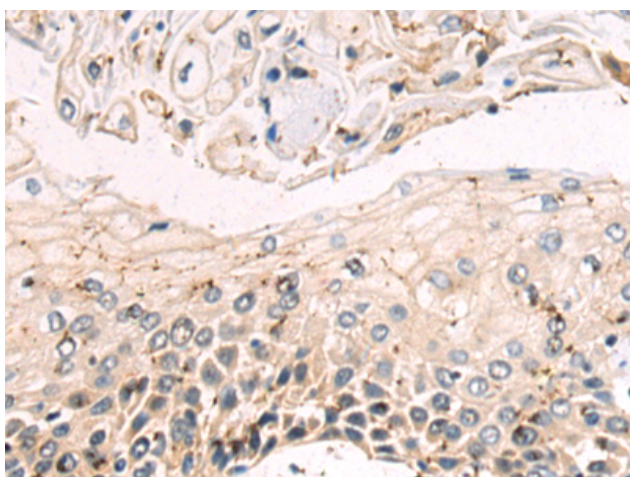
Purification: Antigen affinity purification

Species Reactivity: Human, Mouse

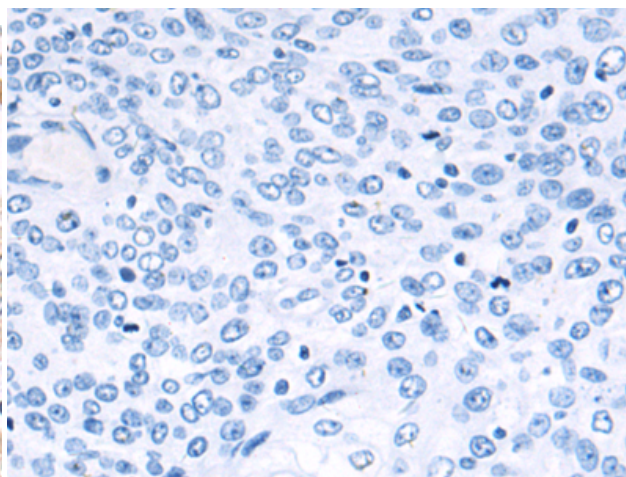
Constituents: PBS (without Mg²⁺ and Ca²⁺), pH 7.4, 150 mM NaCl, 0.05% Sodium Azide and 40% glycerol

Research Areas: Cell Biology

Storage & Shipping: Store at -20°C. Avoid repeated freezing and thawing



Immunohistochemistry analysis of paraffin embedded Human esophagus cancer tissue using 218603 (DENND1B Antibody) at a dilution of 1/100 (Cytoplasm).



In comparison with the IHC on the left, the same paraffin-embedded Human esophagus cancer tissue is first treated with the fusion protein and then with 218603 (Anti-DENND1B Antibody) at dilution 1/100.