

DESMIN RABBIT PAB

Cat.#: N225356

Product Name: Anti-Desmin Rabbit pAb

Synonyms: DES; Desmin

UNIPROT ID: P17661

Background: Desmin a class-III intermediate filaments found in muscle cells. In adult striated muscle they form a fibrous network connecting myofibrils to each other and to the plasma membrane from the periphery of the Z-line structures. Mutations in this gene are associated with desmin-related myopathy, a familial cardiac and skeletal myopathy (CSM), and with distal myopathies.

Immunogen: The antiserum was produced against synthesized peptide derived from human Desmin. AA range:421-470

Applications: WB,IHC-F,IHC-P,ICC/IF,ELISA

Recommended Dilutions: WB: 1/500-1/1000 IHC: 1/50-1/100 IF: 1/50-1/200
ELISA: 1/10000

Host Species: Rabbit

Clonality: Rabbit Polyclonal

Clone ID: -

MW: Calculated MW: 54 kDa; Observed MW: 54 kDa

Isotype: IgG

Purification: Affinity Chromatography

Species Reactivity: Human,Mouse,Rat

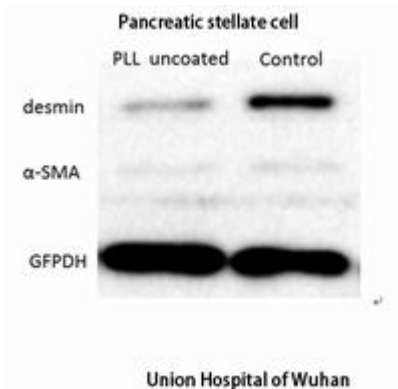
Conjugation: Unconjugated

Modification: Unmodified

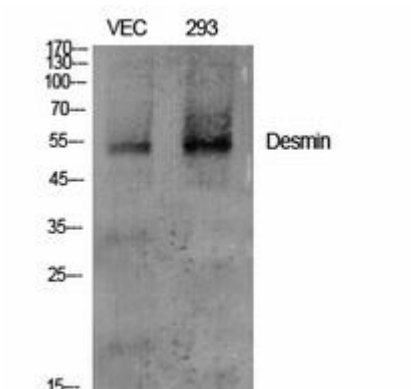
Constituents: PBS (without Mg²⁺ and Ca²⁺), pH 7.3 containing 50% glycerol, 0.5% BSA and 0.02% sodium azide

Research Areas: Signal Transduction

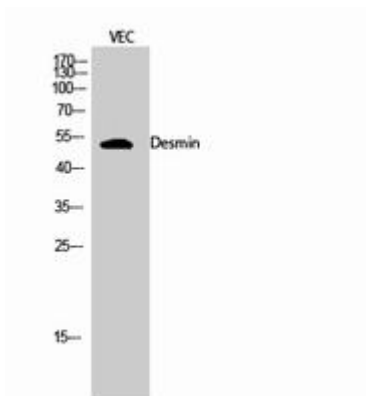
Storage & Shipping: Store at -20°C. Avoid repeated freezing and thawing



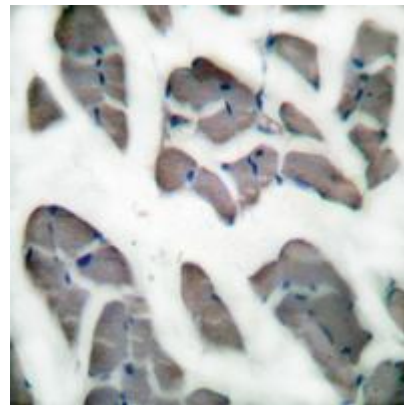
Western blot analysis of Desmin in pancreatic stellate lysates using Desmin antibody.



Western blot analysis of Desmin in various lysates using Desmin antibody.



Western blot analysis of Desmin in VEC lysates using Desmin antibody.



Immunohistochemistry analysis of paraffin-embedded Human skeletal muscle tissue using Desmin antibody. High-pressure and temperature Sodium Citrate pH 6.0 was used for antigen retrieval. Sample with blocking peptide on the right.