

## DESTRIN RABBIT MAB

**Cat.#:** N262127

**Product Name:** Anti-Destrin Rabbit Monoclonal Antibody

**Synonyms:** ACTDP; ADF; corn1; Destrin; DSN; Dstn; HEL32; Sid 23; sid23p

**UNIPROT ID:** P60981

**Background:** Actin-depolymerizing protein. Severs actin filaments (F-actin) and binds to actin monomers (G-actin). Acts in a pH-independent manner.

**Immunogen:** A synthetic peptide of human Destrin

**Applications:** WB,IHC-P,IP

**Recommended Dilutions:** WB: 1/500-1/1000 IHC: 1/50-1/100 IP: 1/20

**Host Species:** Rabbit

**Clonality:** Rabbit Monoclonal

**Clone ID:** R08-5A6

**MW:** Calculated MW: 19 kDa; Observed MW: 19 kDa

**Isotype:** IgG

**Purification:** Affinity Purified

**Species Reactivity:** Human,Rat

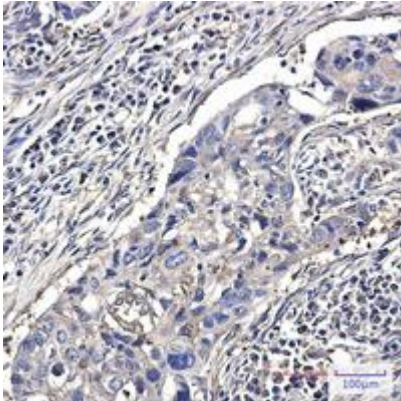
**Conjugation:** Unconjugated

**Modification:** Unmodified

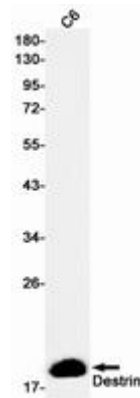
**Constituents:** PBS (without Mg<sup>2+</sup> and Ca<sup>2+</sup>), pH 7.3 containing 50% glycerol, 0.5% BSA and 0.02% sodium azide

**Research Areas:** Cell Biology

**Storage & Shipping:** Store at -20°C. Avoid repeated freezing and thawing



Immunohistochemistry analysis of paraffin-embedded Human lung cancer using Destrin antibody. High-pressure and temperature Sodium Citrate pH 6.0 was used for antigen retrieval.



Western blot analysis of Destrin in C6 lysates using Destrin antibody.