

## DGCR8 RABBIT MAB

**Cat.#:** N262131

**Product Name:** Anti-DGCR8 Rabbit Monoclonal Antibody

**Synonyms:** DGCR8; DGCRK6; Gyl; C22orf12; D16Wis2; pasha

**UNIPROT ID:** Q8WYQ5

**Background:** Component of the microprocessor complex that is required to process primary miRNA transcripts (pri-miRNAs) to release precursor miRNA (pre-miRNA) in the nucleus. Within the microprocessor complex, DGCR8 function as a molecular anchor necessary for the recognition of pri-miRNA at dsRNA-ssRNA junction and directs DROSHA to cleave 11 bp away from the junction to release hairpin-shaped pre-miRNAs that are subsequently cut by the cytoplasmic DICER to generate mature miRNAs.

**Immunogen:** Recombinant protein of human DGCR8

**Applications:** WB, ICC/IF, IP

**Recommended Dilutions:** WB: 1/500-1/1000 IF: 1/50-1/200 IP: 1/20

**Host Species:** Rabbit

**Clonality:** Rabbit Monoclonal

**Clone ID:** R05-5A6

**MW:** Calculated MW: 86 kDa; Observed MW: 120 kDa

**Isotype:** IgG

**Purification:** Affinity Purified

**Species Reactivity:** Human, Mouse, Rat

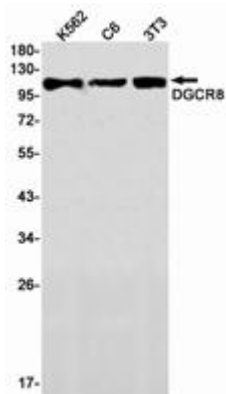
**Conjugation:** Unconjugated

**Modification:** Unmodified

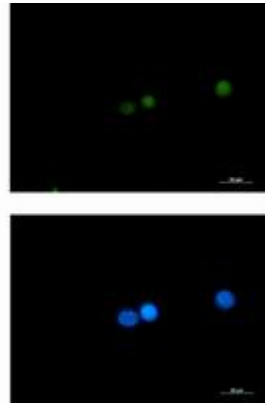
**Constituents:** PBS (without Mg<sup>2+</sup> and Ca<sup>2+</sup>), pH 7.3 containing 50% glycerol, 0.5% BSA and 0.02% sodium azide

**Research Areas:** Epigenetics and Nuclear Signaling

**Storage & Shipping:** Store at -20°C. Avoid repeated freezing and thawing



Western blot analysis of DGCR8 in K562, C6, 3T3 lysates using DGCR8 antibody.



Immunocytochemistry analysis of DGCR8 (green) in K562 using DGCR8 antibody, and DAPI (blue).