

DHRS1 RABBIT PAB

Cat.#: S218639

Product Name: Anti-DHRS1 Rabbit Polyclonal Antibody

Synonyms: SDR19C1

UNIPROT ID: Q96LJ7 (Gene Accession - BC015943)

Background: This gene encodes a member of the short-chain dehydrogenases/reductases (SDR) family. The encoded enzyme contains a conserved catalytic domain and likely functions as an oxidoreductase. Multiple alternatively spliced variants, encoding the same protein, have been identified.

Immunogen: Fusion protein of human DHRS1

Applications: ELISA, WB, IHC

Recommended Dilutions: IHC: 25-100;WB: 500-2000;ELISA: 5000-10000

Host Species: Rabbit

Clonality: Rabbit Polyclonal

Isotype: Immunogen-specific rabbit IgG

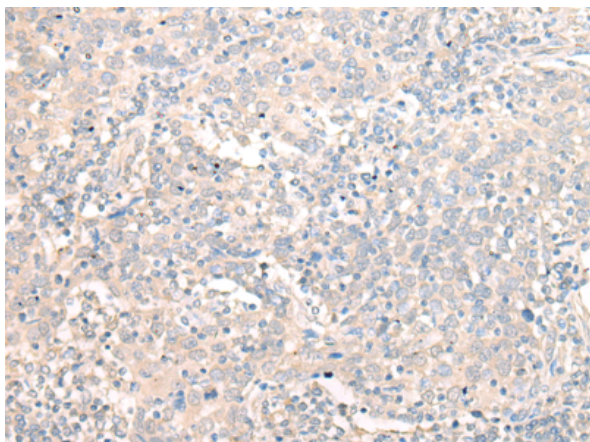
Purification: Antigen affinity purification

Species Reactivity: Human, Mouse

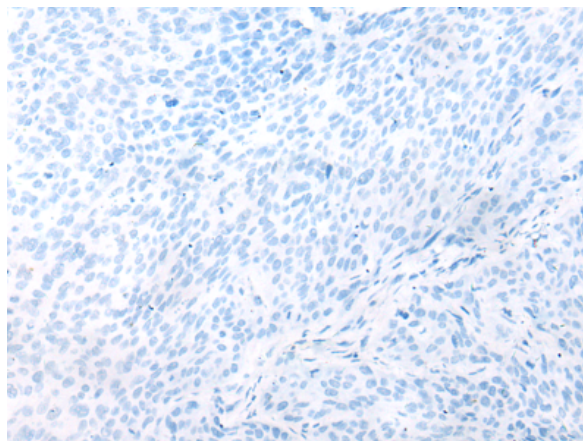
Constituents: PBS (without Mg²⁺ and Ca²⁺), pH 7.4, 150 mM NaCl, 0.05% Sodium Azide and 40% glycerol

Research Areas: Cell Biology

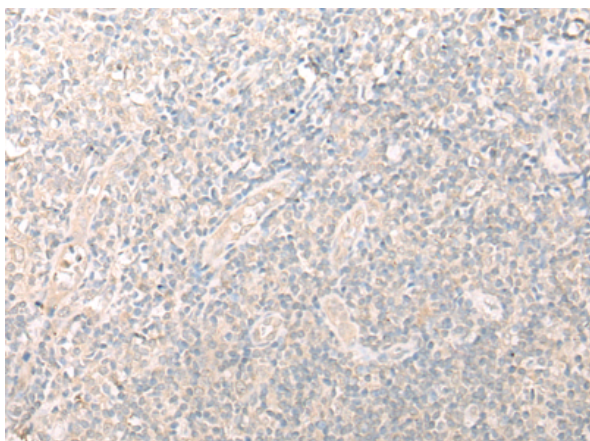
Storage & Shipping: Store at -20°C. Avoid repeated freezing and thawing



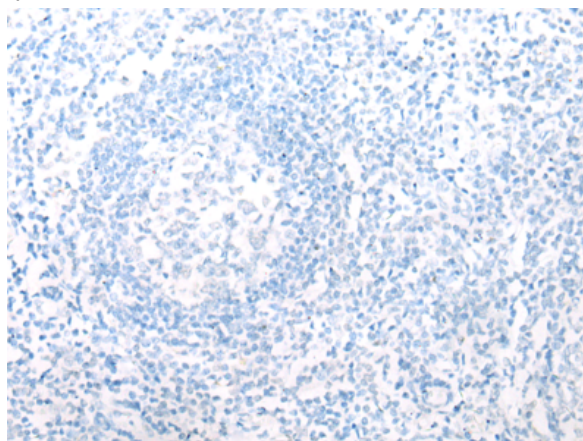
Immunohistochemistry analysis of paraffin embedded Human cervical cancer tissue using 218639(DHRS1 Antibody) at a dilution of 1/20(Cytoplasm).



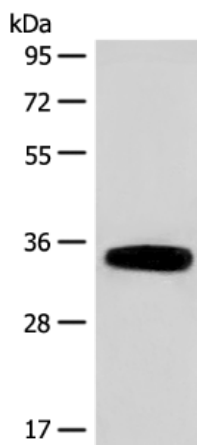
In comparison with the IHC on the left, the same paraffin-embedded Human cervical cancer tissue is first treated with the fusion protein and then with 218639(Anti-DHRS1 Antibody) at dilution 1/20.



The image on the left is immunohistochemistry of paraffin-embedded Human tonsil tissue using 218639(Anti-DHRS1 Antibody) at a dilution of 1/20.



In comparison with the IHC on the left, the same paraffin-embedded Human tonsil tissue is first treated with fusion protein and then with D224852(Anti-DHRS1 Antibody) at dilution 1/20.



Gel: 8%SDS-PAGE, Lysate: 40 µg;
Lane: Human fetal liver tissue lysate;
Primary antibody: 218639(DHRS1 Antibody) at dilution 1/400;
Secondary antibody: Goat anti rabbit IgG at 1/8000 dilution;
Exposure time: 1 minute



Product Description

Pioneering GTPase and Oncogene Product Development since 2010
