

DHR SX RABBIT PAB

Cat.#: S218155

Product Name: Anti-DHR SX Rabbit Polyclonal Antibody

Synonyms: DHR SY; DHR S5X; DHR S5Y; DHR SX Y; SDR 7C6; CXorf11; SDR 46C1

UNIPROT ID: Q8N5I4 (Gene Accession - BC032340)

Background: Predicted to enable oxidoreductase activity. Involved in positive regulation of autophagy. Located in extracellular region.

Immunogen: Fusion protein of human DHR SX

Applications: ELISA, IHC

Recommended Dilutions: IHC: 50-200; ELISA: 5000-10000

Host Species: Rabbit

Clonality: Rabbit Polyclonal

Isotype: Immunogen-specific rabbit IgG

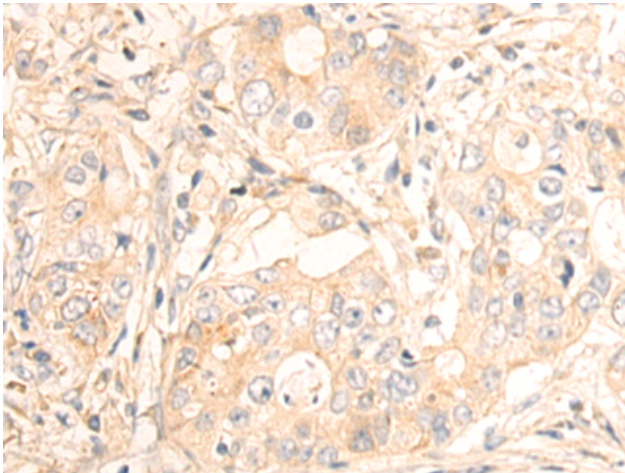
Purification: Antigen affinity purification

Species Reactivity: Human

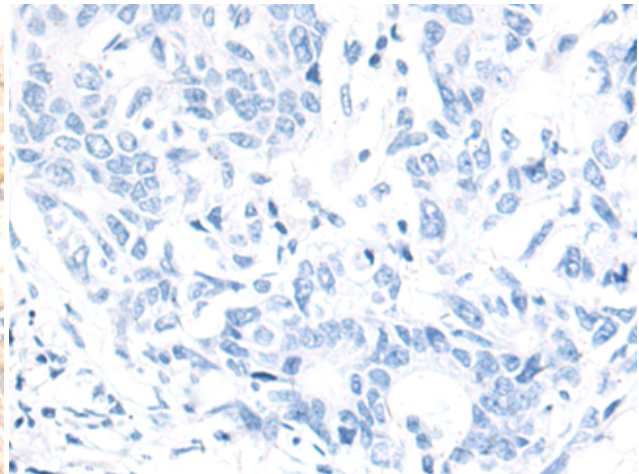
Constituents: PBS (without Mg²⁺ and Ca²⁺), pH 7.4, 150 mM NaCl, 0.05% Sodium Azide and 40% glycerol

Research Areas: Cell Biology

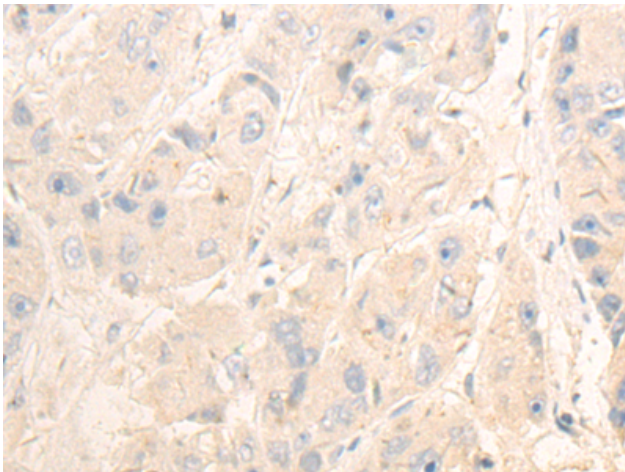
Storage & Shipping: Store at -20°C. Avoid repeated freezing and thawing



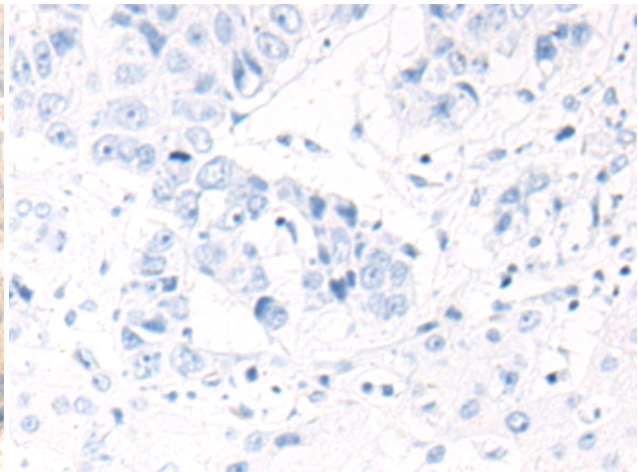
Immunohistochemistry analysis of paraffin embedded Human gastric cancer tissue using 218155 (DHR SX Antibody) at a dilution of 1/80 (Cytoplasm).



In comparison with the IHC on the left, the same paraffin-embedded Human gastric cancer tissue is first treated with the fusion protein and then with 218155 (Anti-DHR SX Antibody) at dilution 1/80.



The image on the left is immunohistochemistry of paraffin-embedded Human liver cancer tissue using 218155 (Anti-DHR SX Antibody) at a dilution of 1/80.



In comparison with the IHC on the left, the same paraffin-embedded Human liver cancer tissue is first treated with fusion protein and then with D223837 (Anti-DHR SX Antibody) at dilution 1/80.