

## DIABLO RABBIT PAB

**Cat.#:** S216784

**Product Name:** Anti-DIABLO Rabbit Polyclonal Antibody

**Synonyms:** SMAC; SMAC3; DFNA64; DIABLO-S

**UNIPROT ID:** Q9NR28 (Gene Accession - BC011909 )

**Background:** This gene encodes an inhibitor of apoptosis protein (IAP)-binding protein. The encoded mitochondrial protein enters the cytosol when cells undergo apoptosis, and it moderates the caspase inhibition of IAPs. Multiple polyadenylation sites have been found for this gene. Four alternatively spliced transcript variants have been described for this gene, with two of them encoding different isoforms and the other two probably not encoding a protein. Ubiquitously expressed with highest expression in testis. Expression is also high in heart, liver, kidney, spleen, prostate and ovary. Low in brain, lung, thymus and peripheral blood leukocytes. Isoform 3 is ubiquitously expressed.

**Immunogen:** Fusion protein of human DIABLO

**Applications:** ELISA, WB, IHC

**Recommended Dilutions:** IHC: 50-200;WB: 1000-5000;ELISA: 2000-10000

**Host Species:** Rabbit

**Clonality:** Rabbit Polyclonal

**Isotype:** Immunogen-specific rabbit IgG

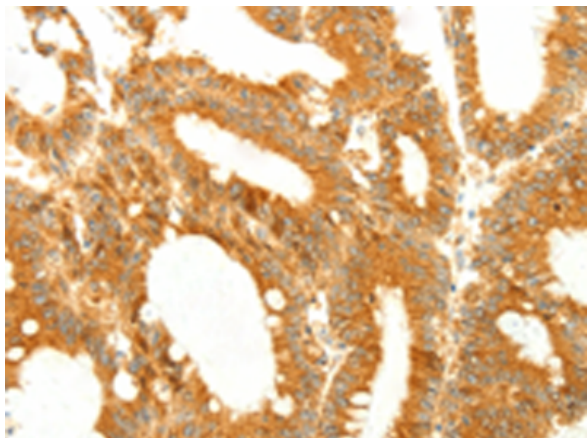
**Purification:** Antigen affinity purification

**Species Reactivity:** Human, Mouse

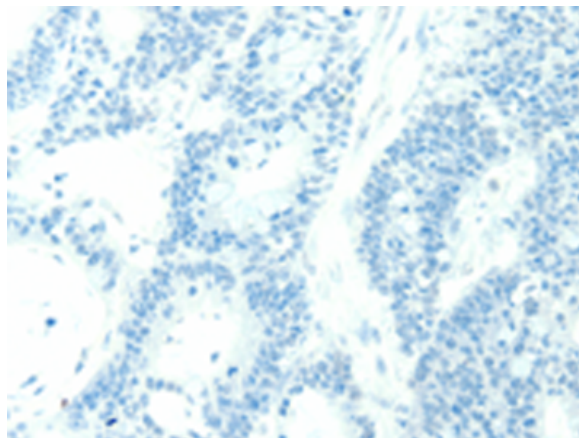
**Constituents:** PBS (without Mg<sup>2+</sup> and Ca<sup>2+</sup>), pH 7.4, 150 mM NaCl, 0.05% Sodium Azide and 40% glycerol

**Research Areas:** Cancer, Metabolism

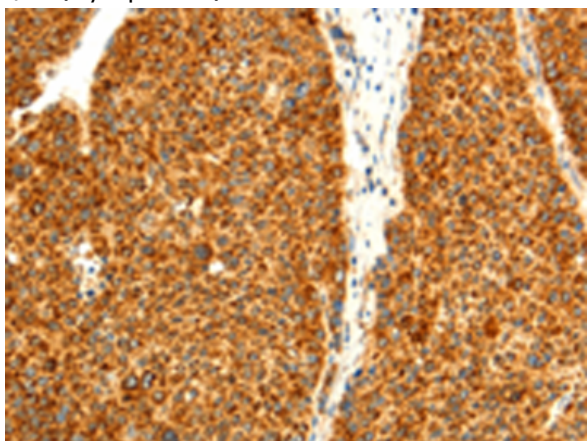
**Storage & Shipping:** Store at -20°C. Avoid repeated freezing and thawing



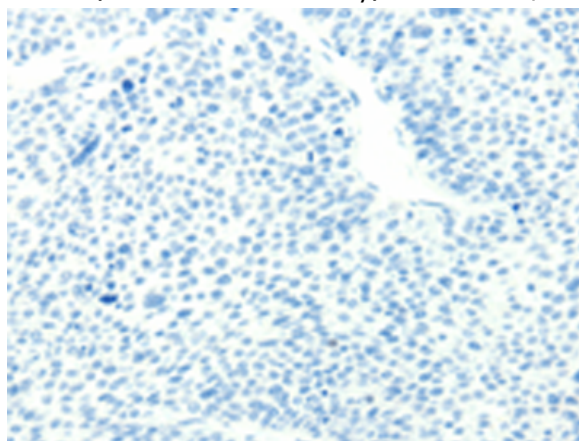
Immunohistochemistry analysis of paraffin embedded Human colon cancer tissue using 216784(DIABLO Antibody) at a dilution of 1/50(Cytoplasm).



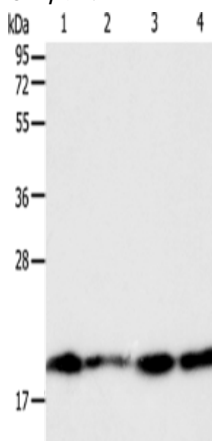
In comparison with the IHC on the left, the same paraffin-embedded Human colon cancer tissue is first treated with the fusion protein and then with 216784(Anti-DIABLO Antibody) at dilution 1/50.



The image on the left is immunohistochemistry of paraffin-embedded Human liver cancer tissue using 216784(Anti-DIABLO Antibody) at a dilution of 1/50.



In comparison with the IHC on the left, the same paraffin-embedded Human liver cancer tissue is first treated with fusion protein and then with D221233(Anti-DIABLO Antibody) at dilution 1/50.



Gel: 12%SDS-PAGE, Lysate: 40 µg;  
 Lane 1-4: Lncap cells, SKOV3 cells, MCF7 cells, 293T cells;  
 Primary antibody: 216784(DIABLO Antibody) at dilution 1/800;  
 Secondary antibody: Goat anti rabbit IgG at 1/8000 dilution;  
 Exposure time: 1 second



# Product Description

Pioneering GTPase and Oncogene Product Development since 2010

---