

DIPK2B RABBIT PAB

Cat.#: S220486

Product Name: Anti-DIPK2B Rabbit Polyclonal Antibody

Synonyms: DIAIR; CXorf36; PRO3743; EPQL1862; bA435K1.1; 4930578C19Rik

UNIPROT ID: Q9H7Y0 (Gene Accession - NP_078965)

Background: The function of this protein remains unknown.

Immunogen: Synthetic peptide of human DIPK2B

Applications: ELISA, IHC

Recommended Dilutions: IHC: 25-100; ELISA: 5000-10000

Host Species: Rabbit

Clonality: Rabbit Polyclonal

Isotype: Immunogen-specific rabbit IgG

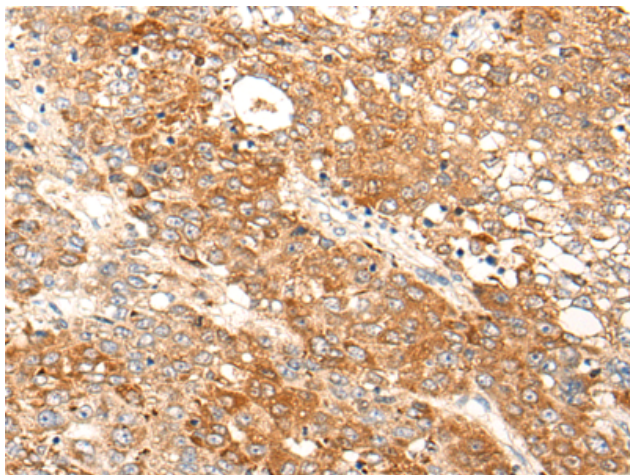
Purification: Antigen affinity purification

Species Reactivity: Human, Mouse

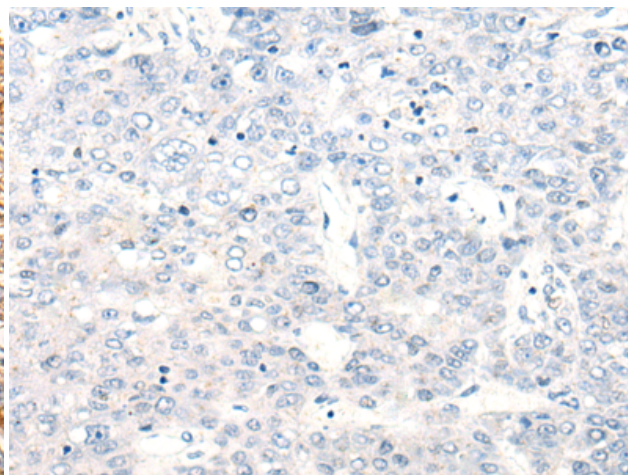
Constituents: PBS (without Mg²⁺ and Ca²⁺), pH 7.4, 150 mM NaCl, 0.05% Sodium Azide and 40% glycerol

Research Areas: Cell Biology

Storage & Shipping: Store at -20°C. Avoid repeated freezing and thawing



Immunohistochemistry analysis of paraffin embedded Human liver cancer tissue using 220486(DIPK2B Antibody) at a dilution of 1/25(Cytoplasm).



In comparison with the IHC on the left, the same paraffin-embedded Human liver cancer tissue is first treated with the synthetic peptide and then with 220486(Anti-DIPK2B Antibody) at dilution 1/25.