

DISC1 RABBIT MAB

Cat.#: N262134

Product Name: Anti-DISC1 Rabbit Monoclonal Antibody

Synonyms: Clorf136; DISC1; KIAA0457; RP4-730B13.1; SCZD9

UNIPROT ID: Q9NRI5

Background: Involved in the regulation of multiple aspects of embryonic and adult neurogenesis. Required for neural progenitor proliferation in the ventricular/subventricular zone during embryonic brain development and in the adult dentate gyrus of the hippocampus.

Immunogen: Recombinant protein of human DISC1

Applications: WB,IHC-F,IHC-P,ICC/IF,IP

Recommended Dilutions: WB: 1/500-1/1000 IHC: 1/50-1/100 IF: 1/50-1/200 IP: 1/20

Host Species: Rabbit

Clonality: Rabbit Monoclonal

Clone ID: R03-7F5

MW: Calculated MW: 94 kDa; Observed MW: 94 kDa

Isotype: IgG

Purification: Affinity Purified

Species Reactivity: Human,Mouse,Rat

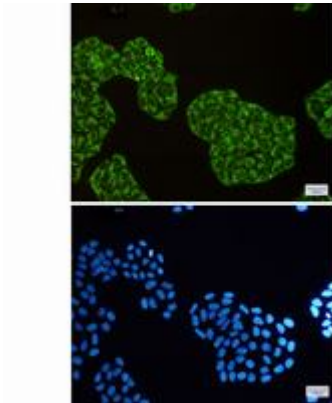
Conjugation: Unconjugated

Modification: Unmodified

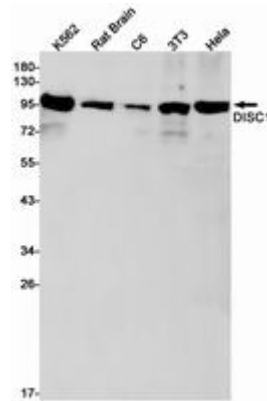
Constituents: PBS (without Mg²⁺ and Ca²⁺), pH 7.3 containing 50% glycerol, 0.5% BSA and 0.02% sodium azide

Research Areas: Neuroscience

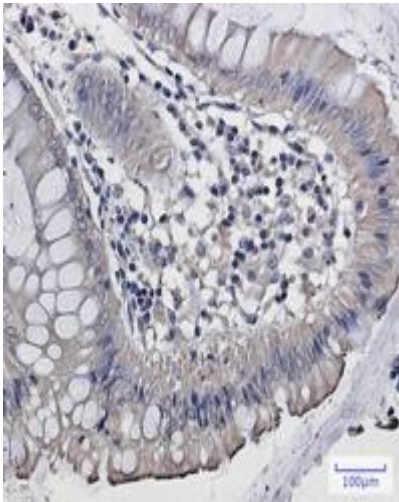
Storage & Shipping: Store at -20°C. Avoid repeated freezing and thawing



Immunocytochemistry analysis of DISC1 (green) in HeLa using DISC1 antibody, and DAPI (blue)



Western blot analysis of DISC1 in K562, rat Brain, C6, 3T3, HeLa lysates using DISC1 antibody.



Immunohistochemistry analysis of paraffin-embedded Human colon cancer using DISC1 antibody. High-pressure and temperature Sodium Citrate pH 6.0 was used for antigen retrieval.