

DLEU7 RABBIT PAB

Cat.#: N225144

Product Name: Anti-DLEU7 Rabbit pAb

Synonyms: Leukemia-associated protein 7 (Deleted in lymphocytic leukemia 7)

UNIPROT ID: Q6UYE1

Background: -

Immunogen: The antiserum was produced against synthesized peptide derived from the Internal region of human DLEU7. AA range:51-100

Applications: IHC-P,ELISA

Recommended Dilutions: IHC: 1/50-1/100 ELISA: 1/10000

Host Species: Rabbit

Clonality: Rabbit Polyclonal

Clone ID: -

MW: -

Isotype: IgG

Purification: Affinity Purified

Species Reactivity: Human

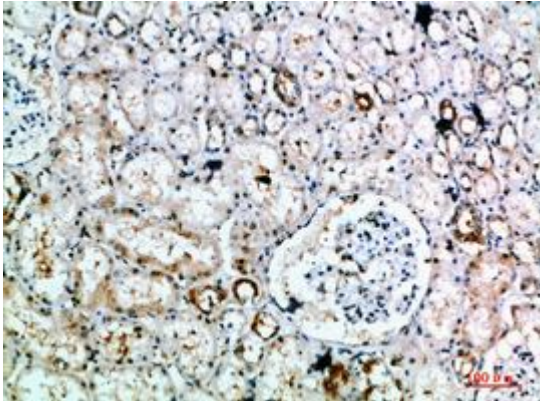
Conjugation: Unconjugated

Modification: Unmodified

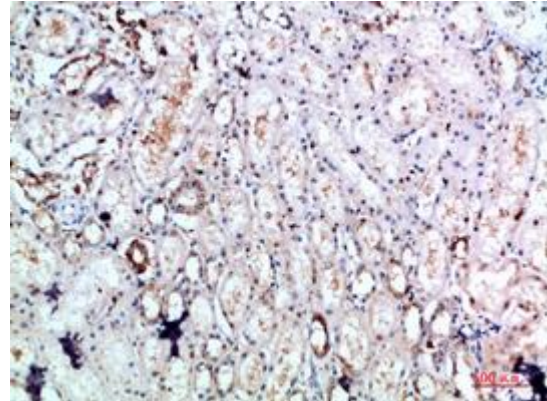
Constituents: PBS (without Mg²⁺ and Ca²⁺), pH 7.3 containing 50% glycerol, 0.5% BSA and 0.02% sodium azide

Research Areas: Cell Biology

Storage & Shipping: Store at -20°C. Avoid repeated freezing and thawing



Immunohistochemical analysis of paraffin-embedded Human tonsils using DLEU7 antibody. High-pressure and temperature Sodium Citrate pH 6.0 was used for antigen retrieval.



Immunohistochemistry analysis of paraffin-embedded Human kidney using DLEU7 antibody. High-pressure and temperature Sodium Citrate pH 6.0 was used for antigen retrieval.