

## DNA POLYMERASE MU RABBIT PAB

**Cat.#:** N225167

**Product Name:** Anti-DNA Polymerase mu Rabbit pAb

**Synonyms:** POLM; polmu; DNA-directed DNA/RNA polymerase mu; Pol Mu; Terminal transferase

**UNIPROT ID:** Q9NP87

**Background:** Gap-filling polymerase involved in repair of DNA double-strand breaks by non-homologous end joining (NHEJ).

**Immunogen:** Synthesized peptide derived from DNA Pol  $\mu$  . at AA range: 210-290

**Applications:** WB,ELISA

**Recommended Dilutions:** WB: 1/500-1/1000 ELISA: 1/10000

**Host Species:** Rabbit

**Clonality:** Rabbit Polyclonal

**Clone ID:** -

**MW:** Calculated MW: 55 kDa; Observed MW: 55 kDa

**Isotype:** IgG

**Purification:** Affinity Purified

**Species Reactivity:** Human

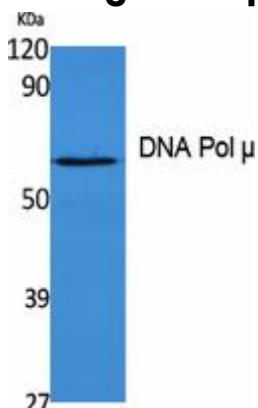
**Conjugation:** Unconjugated

**Modification:** Unmodified

**Constituents:** PBS (without  $Mg^{2+}$  and  $Ca^{2+}$ ), pH 7.3 containing 50% glycerol, 0.5% BSA and 0.02% sodium azide

**Research Areas:** Epigenetics and Nuclear Signaling

**Storage & Shipping:** Store at  $-20^{\circ}C$ . Avoid repeated freezing and thawing



Western blot analysis of DNA Polymerase mu in K562 lysates using DNA Pol  $\mu$  antibody.



# Product Description

Pioneering GTPase and Oncogene Product Development since 2010

---