

## DNAJB1 RABBIT PAB

**Cat.#:** S217073

**Product Name:** Anti-DNAJB1 Rabbit Polyclonal Antibody

**Synonyms:** Hdj1; Sis1; HSPF1; Hsp40; RSPH16B

**UNIPROT ID:** P25685 (Gene Accession - BC002352 )

**Background:** Heat shock protein 40 (HSP 40) family proteins bind to HSP 70 through their J-domain and regulate the function of HSP 70 by stimulating HSP 70 ATPase activity. HSP 40, also known as DnaJ, functions together with DnaK (HSP 70) and GrpE as a molecular chaperone, involving them in assembly and disassembly of protein complexes, protein folding, renaturation of denatured proteins, prevention of protein aggregation and protein export. HSP 40 stimulates the association between HSC 70 and HIP and translocates rapidly from the cytoplasm to the nuclei, and especially to the nucleoli, upon heat shock. There are five known HSP 40 family proteins.

**Immunogen:** Fusion protein of human DNAJB1

**Applications:** ELISA, WB, IHC

**Recommended Dilutions:** IHC: 50-200;WB: 500-2000;ELISA: 2000-5000

**Host Species:** Rabbit

**Clonality:** Rabbit Polyclonal

**Isotype:** Immunogen-specific rabbit IgG

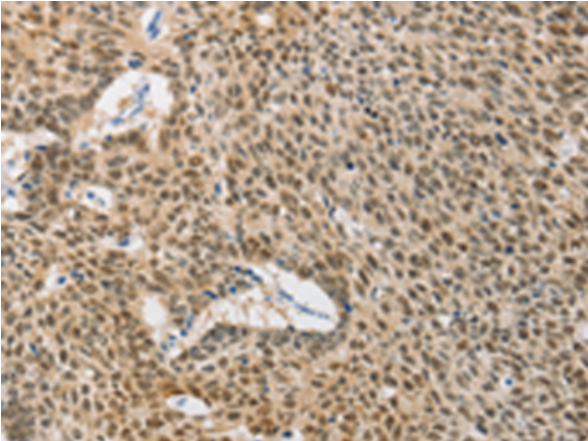
**Purification:** Antigen affinity purification

**Species Reactivity:** Human, Mouse

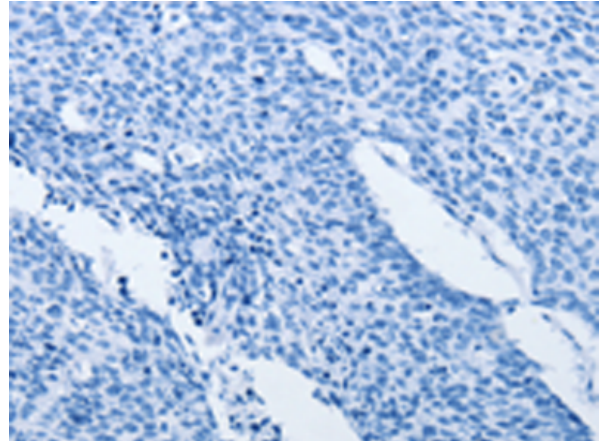
**Constituents:** PBS (without Mg<sup>2+</sup> and Ca<sup>2+</sup>), pH 7.4, 150 mM NaCl, 0.05% Sodium Azide and 40% glycerol

**Research Areas:** Signal Transduction

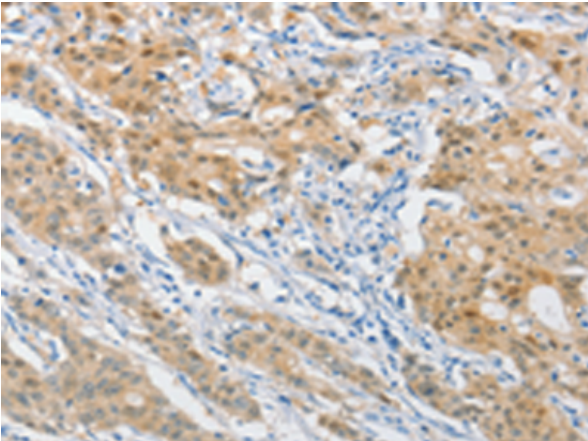
**Storage & Shipping:** Store at -20°C. Avoid repeated freezing and thawing



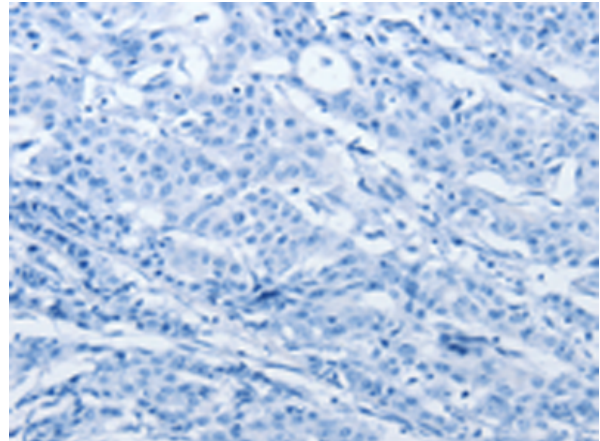
Immunohistochemistry analysis of paraffin embedded Human lung cancer tissue using 217073(DNAJB1 Antibody) at a dilution of 1/40(Cytoplasm and Nucleus).



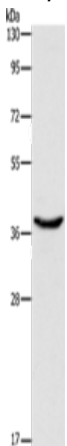
In comparison with the IHC on the left, the same paraffin-embedded Human lung cancer tissue is first treated with the fusion protein and then with 217073(Anti-DNAJB1 Antibody) at dilution 1/40.



The image on the left is immunohistochemistry of paraffin-embedded Human gastric cancer tissue using 217073(Anti-DNAJB1 Antibody) at a dilution of 1/40.



In comparison with the IHC on the left, the same paraffin-embedded Human gastric cancer tissue is first treated with fusion protein and then with D221744(Anti-DNAJB1 Antibody) at dilution 1/40.



Gel: 15%SDS-PAGE, Lysate: 40 µg;  
Lane: 293T cells;  
Primary antibody: 217073(DNAJB1 Antibody) at dilution 1/750;  
Secondary antibody: Goat anti rabbit IgG at 1/8000 dilution;  
Exposure time: 1 second



# Product Description

Pioneering GTPase and Oncogene Product Development since 2010

---