

## DNAJB4 RABBIT PAB

**Cat.#:** S221914

**Product Name:** Anti-DNAJB4 Rabbit Polyclonal Antibody

**Synonyms:** DjB4; HLJ1; DNAJW

**UNIPROT ID:** Q9UDY4 (Gene Accession - NP\_008965 )

**Background:** The protein encoded by this gene is a molecular chaperone, tumor suppressor, and member of the heat shock protein-40 family. The encoded protein binds the cell adhesion protein E-cadherin and targets it to the plasma membrane. This protein also binds incorrectly folded E-cadherin and targets it for endoplasmic reticulum-associated degradation. This gene is a strong tumor suppressor for colorectal carcinoma, and downregulation of it may serve as a good biomarker for predicting patient outcomes. Several transcript variants encoding different isoforms have been found for this gene.

**Immunogen:** Synthetic peptide of human DNAJB4

**Applications:** ELISA, IHC

**Recommended Dilutions:** IHC: 20-100; ELISA: 5000-10000

**Host Species:** Rabbit

**Clonality:** Rabbit Polyclonal

**Isotype:** Immunogen-specific rabbit IgG

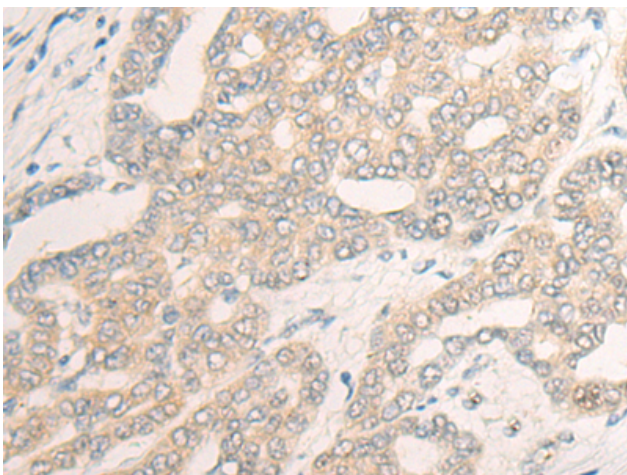
**Purification:** Antigen affinity purification

**Species Reactivity:** Human, Mouse

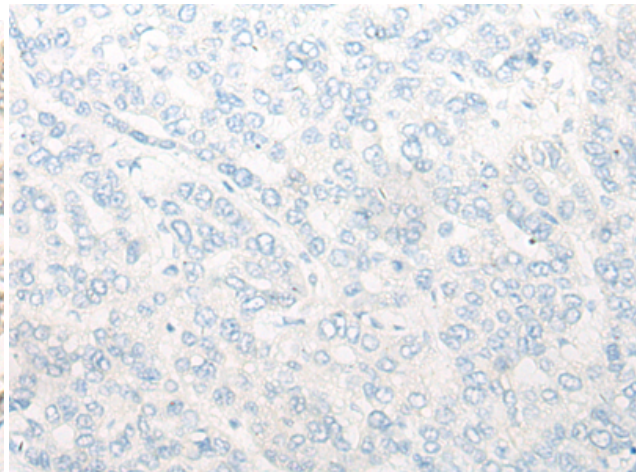
**Constituents:** PBS (without Mg<sup>2+</sup> and Ca<sup>2+</sup>), pH 7.4, 150 mM NaCl, 0.05% Sodium Azide and 40% glycerol

**Research Areas:** Signal Transduction, Cancer

**Storage & Shipping:** Store at -20°C. Avoid repeated freezing and thawing



Immunohistochemistry analysis of paraffin embedded Human liver cancer tissue using 221914(DNAJB4 Antibody) at a dilution of 1/20(Cytoplasm).



In comparison with the IHC on the left, the same paraffin-embedded Human liver cancer tissue is first treated with the synthetic peptide and then with 221914(Anti-DNAJB4 Antibody) at dilution 1/20.