

DNAJC10 RABBIT PAB

Cat.#: S216704

Product Name: Anti-DNAJC10 Rabbit Polyclonal Antibody

Synonyms: JPDI, MThr, ERdj5, PDIA19

UNIPROT ID: Q8IXB1 (Gene Accession - BC034713)

Background: This gene encodes an endoplasmic reticulum co-chaperone which is part of the endoplasmic reticulum-associated degradation complex involved in recognizing and degrading misfolded proteins. The encoded protein reduces incorrect disulfide bonds in misfolded glycoproteins. Alternatively spliced transcript variants encoding multiple isoforms have been observed for this gene.

Immunogen: Fusion protein of human DNAJC10

Applications: ELISA, IHC

Recommended Dilutions: IHC: 25-100; ELISA: 1000-5000

Host Species: Rabbit

Clonality: Rabbit Polyclonal

Isotype: Immunogen-specific rabbit IgG

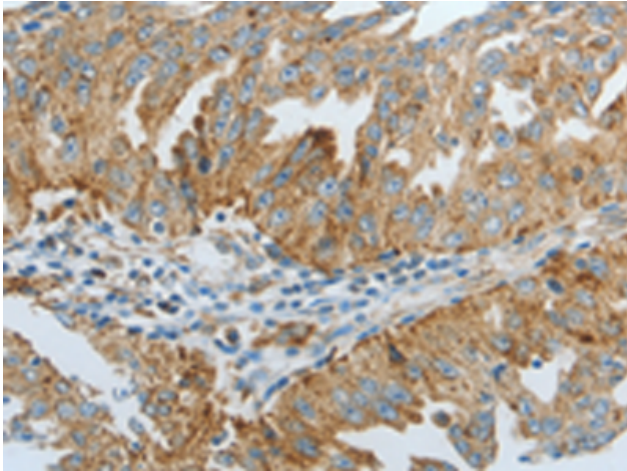
Purification: Antigen affinity purification

Species Reactivity: Human

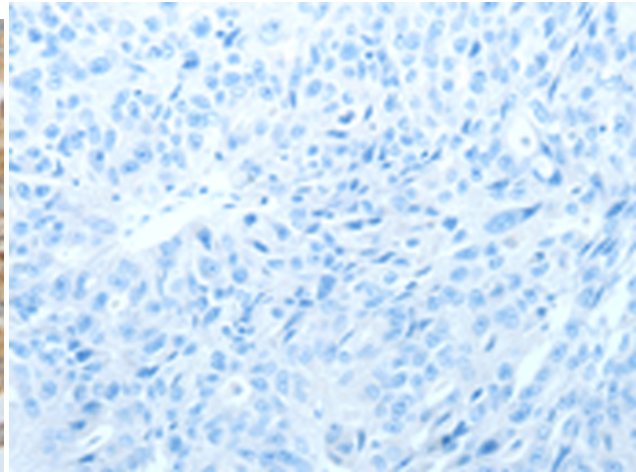
Constituents: PBS (without Mg²⁺ and Ca²⁺), pH 7.4, 150 mM NaCl, 0.05% Sodium Azide and 40% glycerol

Research Areas: Signal Transduction

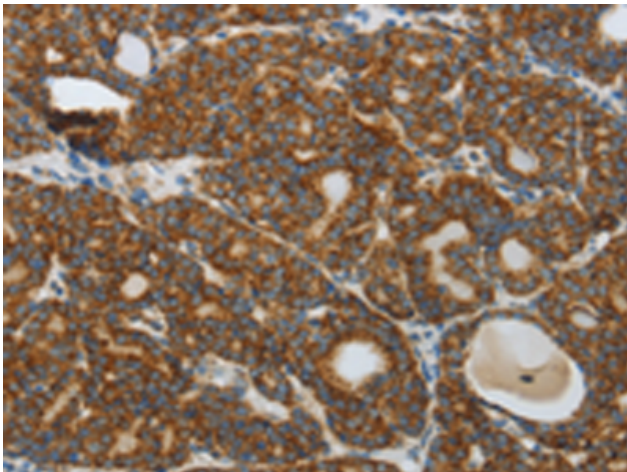
Storage & Shipping: Store at -20°C. Avoid repeated freezing and thawing



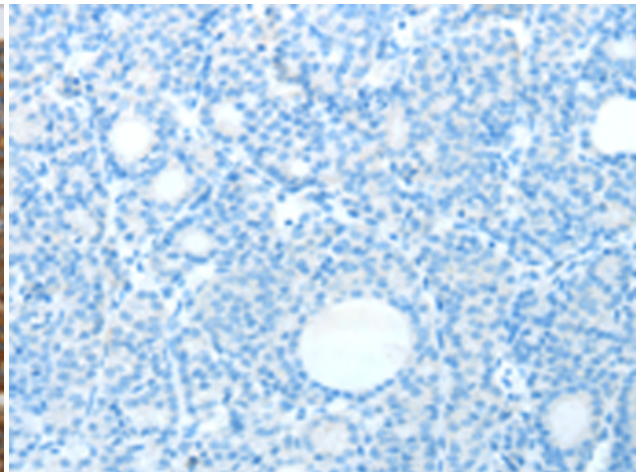
Immunohistochemistry analysis of paraffin embedded Human ovarian cancer tissue using 216704(DNAJC10 Antibody) at a dilution of 1/20(Cytoplasm).



In comparison with the IHC on the left, the same paraffin-embedded Human ovarian cancer tissue is first treated with the fusion protein and then with 216704(Anti-DNAJC10 Antibody) at dilution 1/20.



The image on the left is immunohistochemistry of paraffin-embedded Human thyroid cancer tissue using 216704(Anti-DNAJC10 Antibody) at a dilution of 1/20.



In comparison with the IHC on the left, the same paraffin-embedded Human thyroid cancer tissue is first treated with fusion protein and then with D221087(Anti-DNAJC10 Antibody) at dilution 1/20.