

DNAJC9 RABBIT PAB

Cat.#: S221915

Product Name: Anti-DNAJC9 Rabbit Polyclonal Antibody

Synonyms: JDD1; SB73; HDJC9

UNIPROT ID: Q8WXX5 (Gene Accession - NP_056005)

Background: May play a role as co-chaperone of the Hsp70 family proteins HSPA1A, HSPA1B and HSPA8.

Immunogen: Synthetic peptide of human DNAJC9

Applications: ELISA, IHC

Recommended Dilutions: IHC: Oct-50; ELISA: 5000-10000

Host Species: Rabbit

Clonality: Rabbit Polyclonal

Isotype: Immunogen-specific rabbit IgG

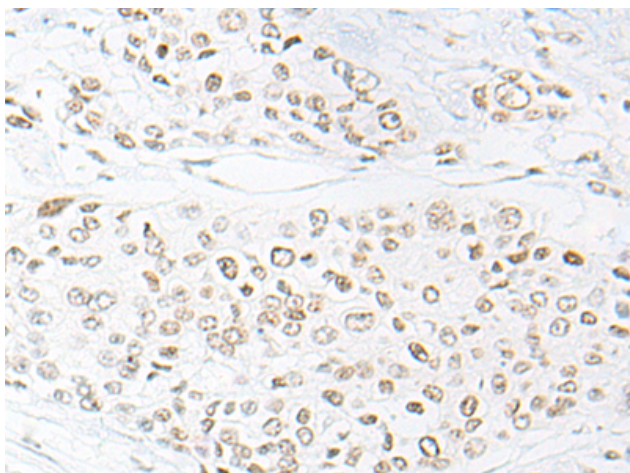
Purification: Antigen affinity purification

Species Reactivity: Human

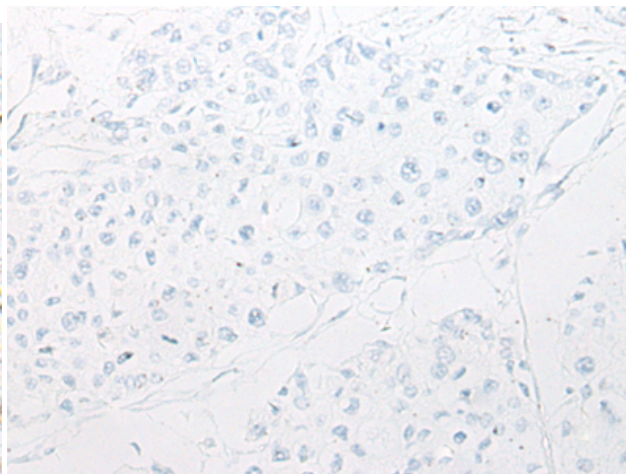
Constituents: PBS (without Mg²⁺ and Ca²⁺), pH 7.4, 150 mM NaCl, 0.05% Sodium Azide and 40% glycerol

Research Areas: Signal Transduction

Storage & Shipping: Store at -20°C. Avoid repeated freezing and thawing



Immunohistochemistry analysis of paraffin embedded Human prostate cancer tissue using 221915 (DNAJC9 Antibody) at a dilution of 1/20 (Nucleus).



In comparison with the IHC on the left, the same paraffin-embedded Human prostate cancer tissue is first treated with the synthetic peptide and then with 221915 (Anti-DNAJC9 Antibody) at dilution 1/20.