

## DNASE1L1 RABBIT PAB

**Cat.#:** S218634

**Product Name:** Anti-DNASE1L1 Rabbit Polyclonal Antibody

**Synonyms:** XIB; G4.8; DNL1L; DNASEX; DNAS1L1

**UNIPROT ID:** P49184 (Gene Accession - BC028092 )

**Background:** This gene encodes a deoxyribonuclease protein that shows high sequence similarity to DNase I. The encoded protein is localized to the endoplasmic reticulum and modified by N-linked glycosylation. Alternate transcriptional splice variants encoding the same protein have been observed.

**Immunogen:** Fusion protein of human DNASE1L1

**Applications:** ELISA, WB, IHC

**Recommended Dilutions:** IHC: 30-150;WB: 200-1000;ELISA: 5000-10000

**Host Species:** Rabbit

**Clonality:** Rabbit Polyclonal

**Isotype:** Immunogen-specific rabbit IgG

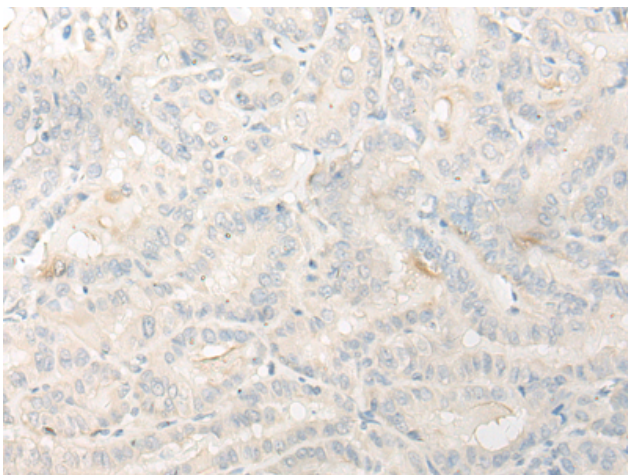
**Purification:** Antigen affinity purification

**Species Reactivity:** Human

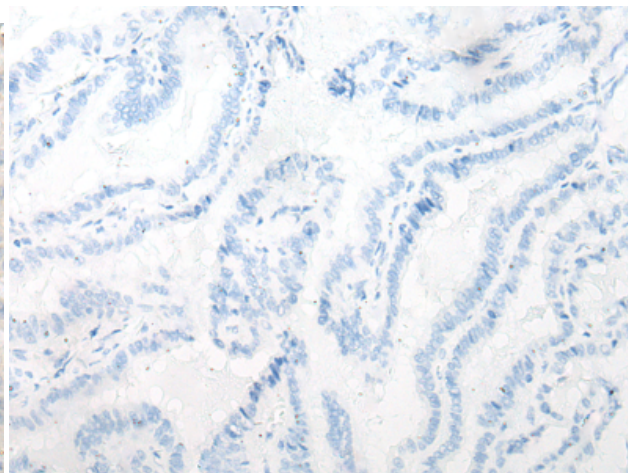
**Constituents:** PBS (without Mg<sup>2+</sup> and Ca<sup>2+</sup>), pH 7.4, 150 mM NaCl, 0.05% Sodium Azide and 40% glycerol

**Research Areas:** Epigenetics and Nuclear Signaling

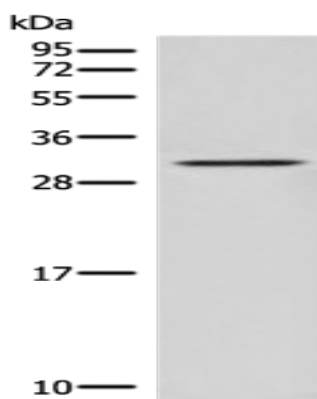
**Storage & Shipping:** Store at -20°C. Avoid repeated freezing and thawing



Immunohistochemistry analysis of paraffin embedded Human thyroid cancer tissue using 218634(DNASE1L1 Antibody) at a dilution of 1/30(Endoplasmic reticulum).



In comparison with the IHC on the left, the same paraffin-embedded Human thyroid cancer tissue is first treated with the fusion protein and then with 218634(Anti-DNASE1L1 Antibody) at dilution 1/30.



Gel: 12%SDS-PAGE, Lysate: 40  $\mu$ g;  
Lane: Human heart tissue lysate;  
Primary antibody: 218634(DNASE1L1 Antibody) at dilution 1/400;  
Secondary antibody: Goat anti rabbit IgG at 1/8000 dilution;  
Exposure time: 5 minutes