

DNM2 RABBIT PAB

Cat.#: S220515

Product Name: Anti-DNM2 Rabbit Polyclonal Antibody

Synonyms: DYN2; CMT2M; DYNII; LCCS5; CMTDII; CMTDIB; DI-CMTB

UNIPROT ID: P50570 (Gene Accession - NP_001005360)

Background: Dynamins represent one of the subfamilies of GTP-binding proteins. These proteins share considerable sequence similarity over the N-terminal portion of the molecule, which contains the GTPase domain. Dynamins are associated with microtubules. They have been implicated in cell processes such as endocytosis and cell motility, and in alterations of the membrane that accompany certain activities such as bone resorption by osteoclasts. Dynamins bind many proteins that bind actin and other cytoskeletal proteins. Dynamins can also self-assemble, a process that stimulates GTPase activity. Five alternatively spliced transcripts encoding different proteins have been described.

Immunogen: Synthetic peptide of human DNM2

Applications: ELISA, WB, IHC

Recommended Dilutions: IHC: 50-200;WB: 500-2000;ELISA: 2000-5000

Host Species: Rabbit

Clonality: Rabbit Polyclonal

Isotype: Immunogen-specific rabbit IgG

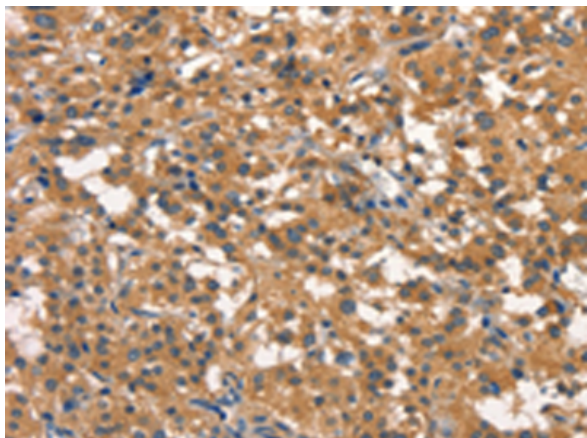
Purification: Antigen affinity purification

Species Reactivity: Human, Mouse, Rat

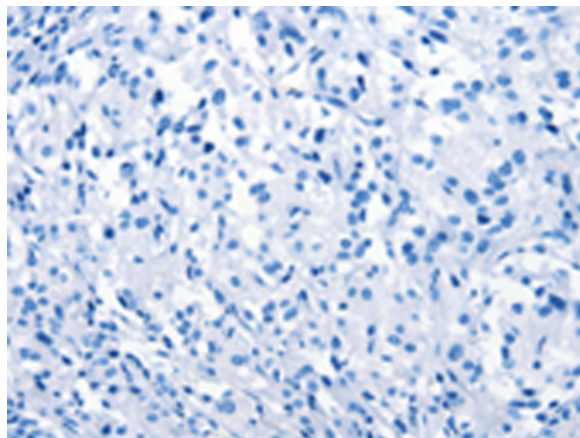
Constituents: PBS (without Mg²⁺ and Ca²⁺), pH 7.4, 150 mM NaCl, 0.05% Sodium Azide and 40% glycerol

Research Areas: Signal Transduction, Neuroscience

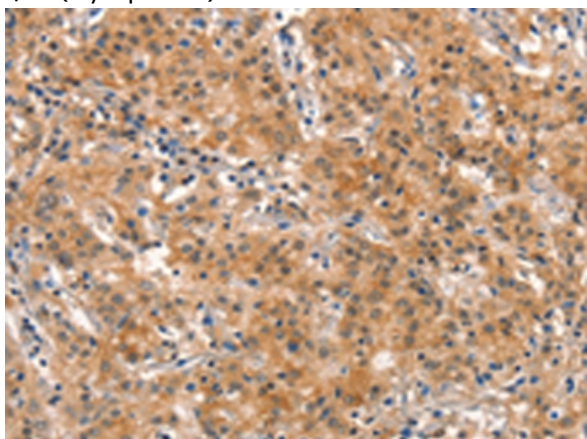
Storage & Shipping: Store at -20°C. Avoid repeated freezing and thawing



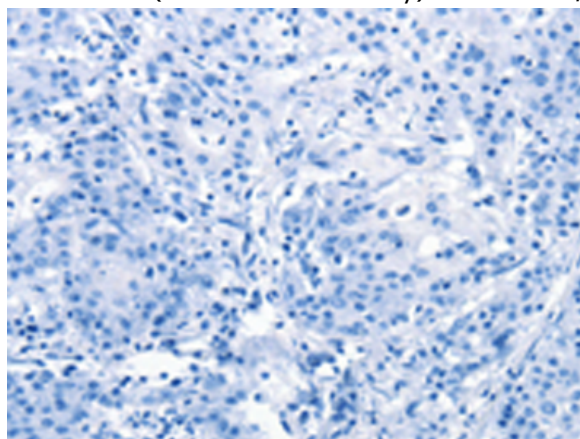
Immunohistochemistry analysis of paraffin embedded Human thyroid cancer tissue using 220515(DNM2 Antibody) at a dilution of 1/40(Cytoplasm).



In comparison with the IHC on the left, the same paraffin-embedded Human thyroid cancer tissue is first treated with the synthetic peptide and then with 220515(Anti-DNM2 Antibody) at dilution 1/40.



The image on the left is immunohistochemistry of paraffin-embedded Human gastric cancer tissue using 220515(Anti-DNM2 Antibody) at a dilution of 1/40.



In comparison with the IHC on the left, the same paraffin-embedded Human gastric cancer tissue is first treated with synthetic peptide and then with D261637(Anti-DNM2 Antibody) at dilution 1/40.



Gel: 6%SDS-PAGE, Lysate: 40 µg;
 Lane 1-5: Raji cells, human fetal liver tissue,
 NIH/3T3 cells, mouse brain tissue, hela cells;
 Primary antibody: 220515(DNM2 Antibody) at
 dilution 1/400;
 Secondary antibody: Goat anti rabbit IgG at
 1/8000 dilution;
 Exposure time: 30 seconds



Product Description

Pioneering GTPase and Oncogene Product Development since 2010
