

## DOCK11 RABBIT PAB

**Cat.#:** S221919

**Product Name:** Anti-DOCK11 Rabbit Polyclonal Antibody

**Synonyms:** ACG; ZIZ2; bB128O4.1

**UNIPROT ID:** Q5JSL3 (Gene Accession - NP\_653259 )

**Background:** Small GTPases of the Rho family, Rho, Rac, and Cdc42, are critical regulators of the actin cytoskeleton and many other cellular processes. Rho GTPases are activated by Dbl-homology (DH)-domain-containing guanine nucleotide exchange factors (GEFs). DOCK 11 (dedicator of cytokinesis 11), also known as ACG or ZIZ2 (zizimin2), is a 2073 amino acid protein belonging to the DOCK family of cytokinesis-regulating proteins that is mainly expressed in peripheral blood leukocytes. DOCK 11 functions as a GEF that binds and activates Cdc42 by exchanging bound GDP for free GTP. Cdc42 mediates cell polarity, gene expression, cell cycle progression and cell-cell contacts. Similar to other DOCK family members, DOCK 11 contains a PH domain and two internal DOCK homology regions designated DHR1 and DHR2.

**Immunogen:** Synthetic peptide of human DOCK11

**Applications:** ELISA, IHC

**Recommended Dilutions:** IHC: 20-100; ELISA: 5000-10000

**Host Species:** Rabbit

**Clonality:** Rabbit Polyclonal

**Isotype:** Immunogen-specific rabbit IgG

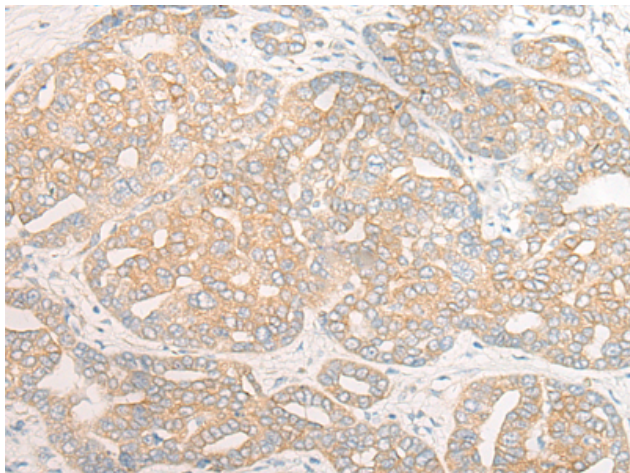
**Purification:** Antigen affinity purification

**Species Reactivity:** Human, Mouse

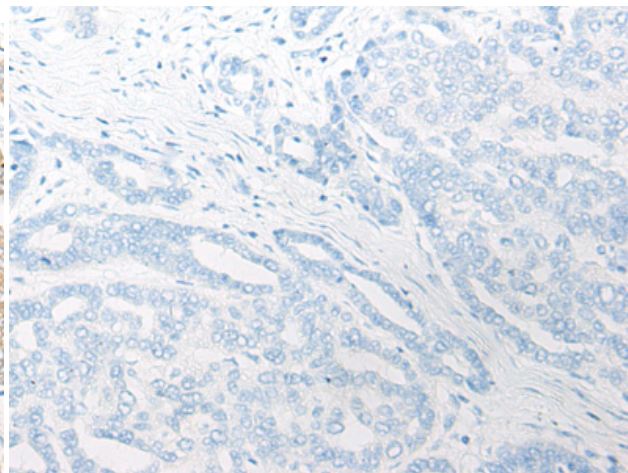
**Constituents:** PBS (without Mg<sup>2+</sup> and Ca<sup>2+</sup>), pH 7.4, 150 mM NaCl, 0.05% Sodium Azide and 40% glycerol

**Research Areas:** Epigenetics and Nuclear Signaling, Cancer

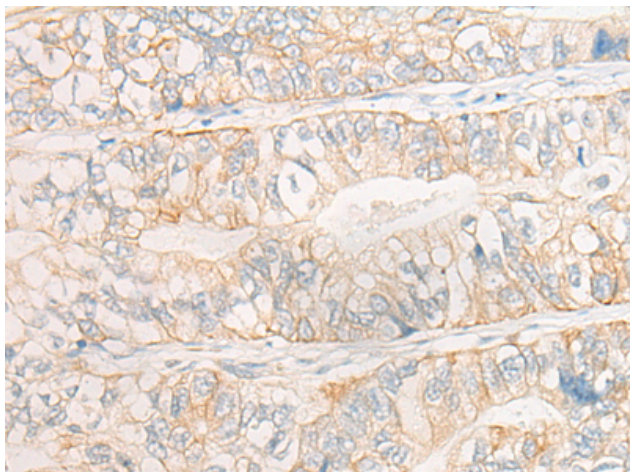
**Storage & Shipping:** Store at -20°C. Avoid repeated freezing and thawing



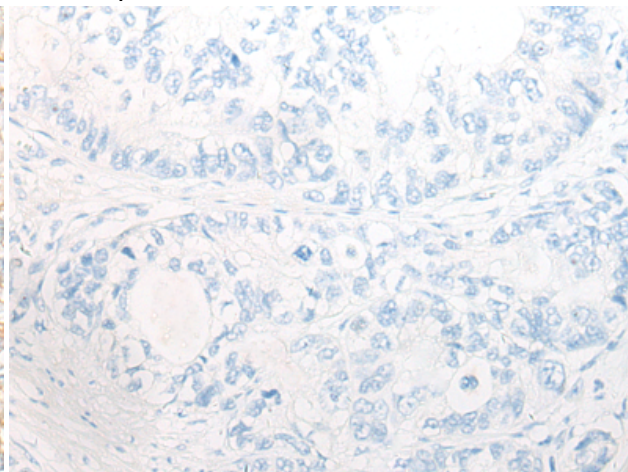
Immunohistochemistry analysis of paraffin embedded Human liver cancer tissue using 221919 (DOCK11 Antibody) at a dilution of 1/20 (Cytoplasm).



In comparison with the IHC on the left, the same paraffin-embedded Human liver cancer tissue is first treated with the synthetic peptide and then with 221919 (Anti-DOCK11 Antibody) at dilution 1/20.



The image on the left is immunohistochemistry of paraffin-embedded Human gastric cancer tissue using 221919 (Anti-DOCK11 Antibody) at a dilution of 1/20.



In comparison with the IHC on the left, the same paraffin-embedded Human gastric cancer tissue is first treated with synthetic peptide and then with D263734 (Anti-DOCK11 Antibody) at dilution 1/20.