

DOCK2 RABBIT MAB

Cat.#: N262144

Product Name: Anti-DOCK2 Rabbit Monoclonal Antibody

Synonyms: DOCK 2; IMD40

UNIPROT ID: Q92608

Background: Involved in cytoskeletal rearrangements required for lymphocyte migration in response of chemokines. Activates RAC1 and RAC2, but not CDC42, by functioning as a guanine nucleotide exchange factor (GEF), which exchanges bound GDP for free GTP.

Immunogen: A synthetic peptide of human DOCK2

Applications: WB,IHC-P

Recommended Dilutions: WB: 1/500-1/1000 IHC: 1/50-1/100

Host Species: Rabbit

Clonality: Rabbit Monoclonal

Clone ID: R04-5H2

MW: Calculated MW: 212 kDa; Observed MW: 212 kDa

Isotype: IgG

Purification: Affinity Purified

Species Reactivity: Human

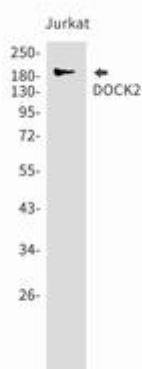
Conjugation: Unconjugated

Modification: Unmodified

Constituents: PBS (without Mg²⁺ and Ca²⁺), pH 7.3 containing 50% glycerol, 0.5% BSA and 0.02% sodium azide

Research Areas: Signal Transduction

Storage & Shipping: Store at -20°C. Avoid repeated freezing and thawing



Western blot analysis of DOCK2 in Jurkat lysates using DOCK2 antibody.



Product Description

Pioneering GTPase and Oncogene Product Development since 2010
