

## DOK2 RABBIT PAB

**Cat.#:** S221414

**Product Name:** Anti-DOK2 Rabbit Polyclonal Antibody

**Synonyms:** p56DOK; p56dok-2

**UNIPROT ID:** O60496 (Gene Accession - NP\_003965 )

**Background:** The protein encoded by this gene is constitutively tyrosine phosphorylated in hematopoietic progenitors isolated from chronic myelogenous leukemia (CML) patients in the chronic phase. It may be a critical substrate for p210(bcr/abl), a chimeric protein whose presence is associated with CML. This encoded protein binds p120 (RasGAP) from CML cells.

**Immunogen:** Synthetic peptide of human DOK2

**Applications:** ELISA, WB, IHC

**Recommended Dilutions:** IHC: 25-50;WB: 500-2000;ELISA: 5000-10000

**Host Species:** Rabbit

**Clonality:** Rabbit Polyclonal

**Isotype:** Immunogen-specific rabbit IgG

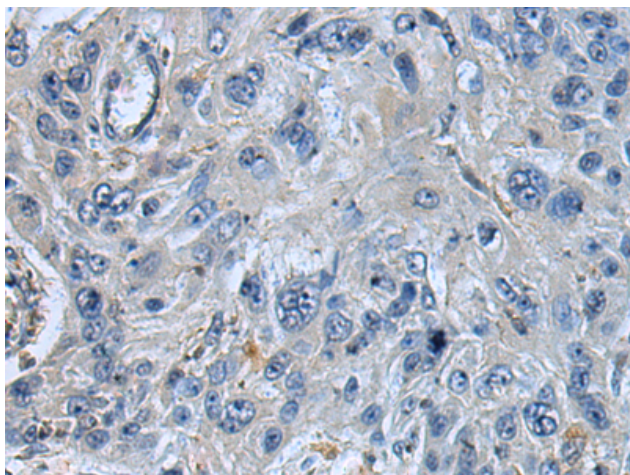
**Purification:** Antigen affinity purification

**Species Reactivity:** Human, Mouse

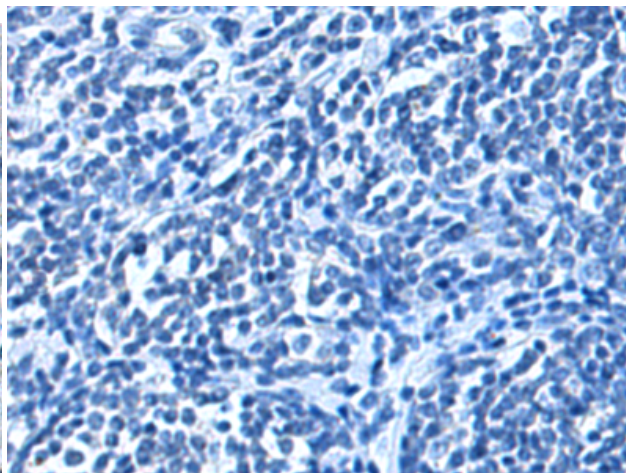
**Constituents:** PBS (without Mg<sup>2+</sup> and Ca<sup>2+</sup>), pH 7.4, 150 mM NaCl, 0.05% Sodium Azide and 40% glycerol

**Research Areas:** Signal Transduction

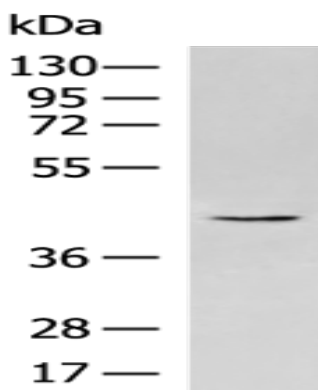
**Storage & Shipping:** Store at -20°C. Avoid repeated freezing and thawing



Immunohistochemistry analysis of paraffin embedded Human esophagus cancer tissue using 221414(DOK2 Antibody) at a dilution of 1/35(Cytoplasm).



In comparison with the IHC on the left, the same paraffin-embedded Human esophagus cancer tissue is first treated with the synthetic peptide and then with 221414(Anti-DOK2 Antibody) at dilution 1/35.



Gel: 8%SDS-PAGE, Lysate: 40  $\mu$ g;  
Lane: Raji cell lysate;  
Primary antibody: 221414(DOK2 Antibody) at dilution 1/800;  
Secondary antibody: HRP-conjugated Goat anti rabbit IgG at 1/5000 dilution;  
Exposure time: 5 minutes