

DOP1A RABBIT PAB

Cat.#: S220023

Product Name: Anti-DOP1A Rabbit Polyclonal Antibody

Synonyms: DOP1; DOPEY1; KIAA1117; dJ202D23.2

UNIPROT ID: Q5JWR5 (Gene Accession - NP_055833.2)

Background: May be involved in protein traffic between late Golgi and early endosomes.

Immunogen: Synthetic peptide of human DOP1A

Applications: ELISA, IHC

Recommended Dilutions: IHC: 25-100; ELISA: 1000-5000

Host Species: Rabbit

Clonality: Rabbit Polyclonal

Isotype: Immunogen-specific rabbit IgG

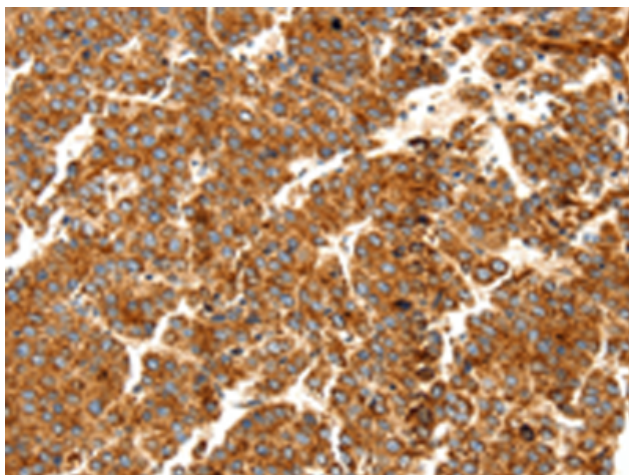
Purification: Antigen affinity purification

Species Reactivity: Human, Mouse

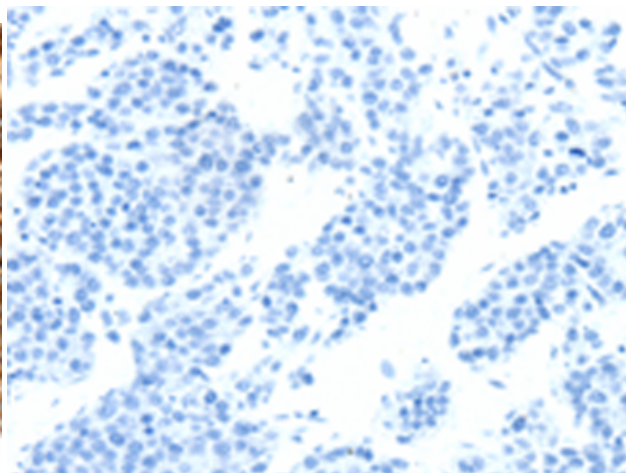
Constituents: PBS (without Mg²⁺ and Ca²⁺), pH 7.4, 150 mM NaCl, 0.05% Sodium Azide and 40% glycerol

Research Areas: Signal Transduction

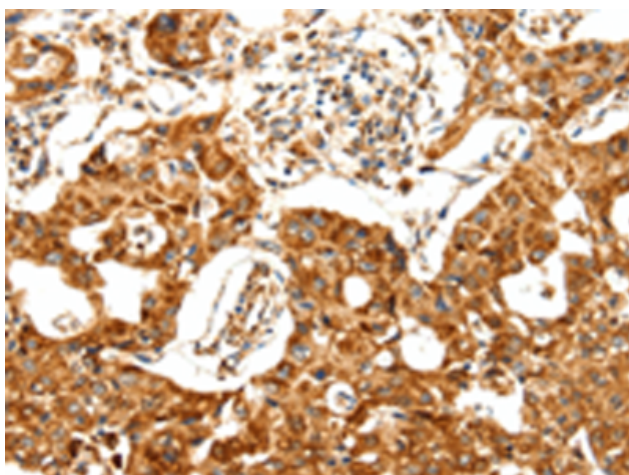
Storage & Shipping: Store at -20°C. Avoid repeated freezing and thawing



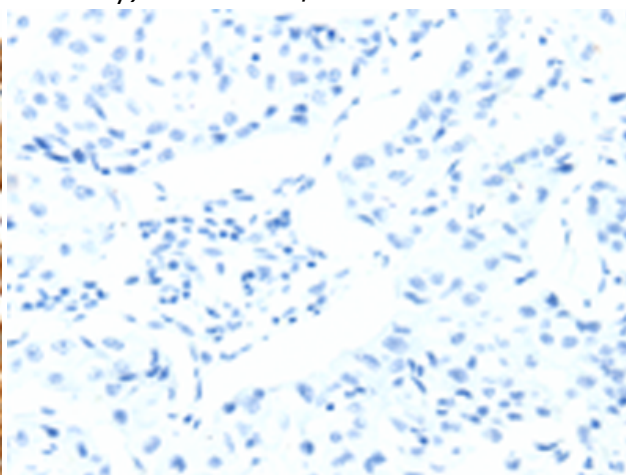
Immunohistochemistry analysis of paraffin embedded Human liver cancer tissue using 220023(DOPIA Antibody) at a dilution of 1/25(Cytoplasm).



In comparison with the IHC on the left, the same paraffin-embedded Human liver cancer tissue is first treated with the synthetic peptide and then with 220023(Anti-DOPIA Antibody) at dilution 1/25.



The image on the left is immunohistochemistry of paraffin-embedded Human lung cancer tissue using 220023(Anti-DOPIA Antibody) at a dilution of 1/25.



In comparison with the IHC on the left, the same paraffin-embedded Human lung cancer tissue is first treated with synthetic peptide and then with D260793(Anti-DOPIA Antibody) at dilution 1/25.