

## DPCD RABBIT PAB

**Cat.#:** S221921

**Product Name:** Anti-DPCD Rabbit Polyclonal Antibody

**Synonyms:**

**UNIPROT ID:** Q9BVM2 (Gene Accession - NP\_056263 )

**Background:** This gene in mouse encodes a protein that may be involved in the generation and maintenance of ciliated cells. In mouse, expression of this gene increases during ciliated cell differentiation, and disruption of this gene has been linked to primary ciliary dyskinesia.

**Immunogen:** Synthetic peptide of human DPCD

**Applications:** ELISA, IHC

**Recommended Dilutions:** IHC: 50-100; ELISA: 5000-10000

**Host Species:** Rabbit

**Clonality:** Rabbit Polyclonal

**Isotype:** Immunogen-specific rabbit IgG

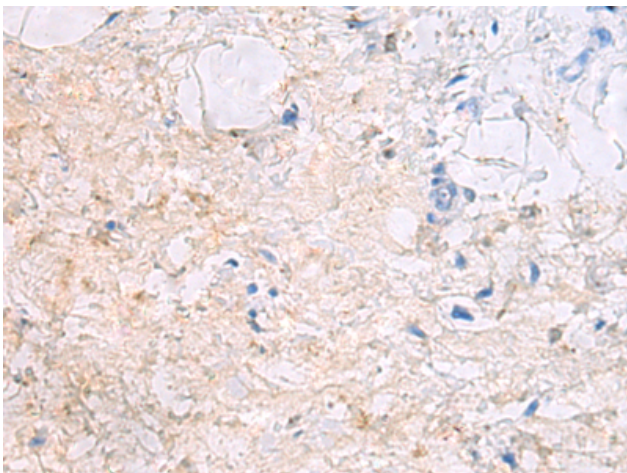
**Purification:** Antigen affinity purification

**Species Reactivity:** Human, Mouse, Rat

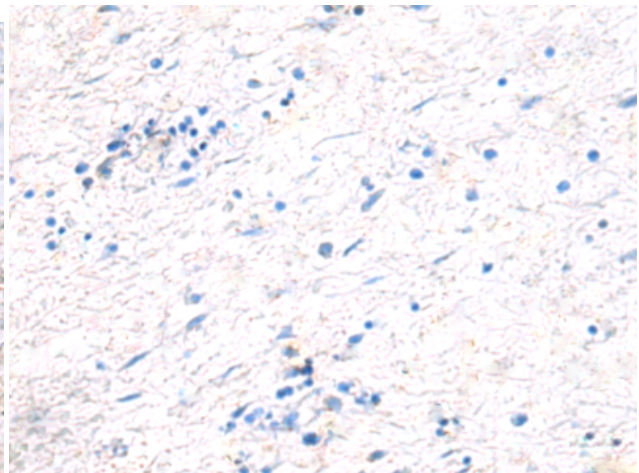
**Constituents:** PBS (without Mg<sup>2+</sup> and Ca<sup>2+</sup>), pH 7.4, 150 mM NaCl, 0.05% Sodium Azide and 40% glycerol

**Research Areas:** Cell Biology

**Storage & Shipping:** Store at -20°C. Avoid repeated freezing and thawing



Immunohistochemistry analysis of paraffin embedded Human gastric cancer tissue using 221921(DPCD Antibody) at a dilution of 1/50(Cytoplasm).



In comparison with the IHC on the left, the same paraffin-embedded Human gastric cancer tissue is first treated with the synthetic peptide and then with 221921(Anti-DPCD Antibody) at dilution 1/50.