

DPYSL5 RABBIT PAB

Cat.#: S219561

Product Name: Anti-DPYSL5 Rabbit Polyclonal Antibody

Synonyms: CV2; CRAM; CRMP5; Ulip6; CRMP-5

UNIPROT ID: Q9BPU6 (Gene Accession - BC002874)

Background: This gene encodes a member of the CRMP (collapsing response mediator protein) family thought to be involved in neural development. Antibodies to the encoded protein were found in some patients with neurologic symptoms who had paraneoplastic syndrome. A pseudogene of this gene is found on chromosome 11. Multiple alternatively spliced variants, encoding the same protein, have been identified.

Immunogen: Fusion protein of human DPYSL5

Applications: ELISA, WB, IHC

Recommended Dilutions: IHC: 100–300;WB: 1000–5000;ELISA: 5000–10000

Host Species: Rabbit

Clonality: Rabbit Polyclonal

Isotype: Immunogen-specific rabbit IgG

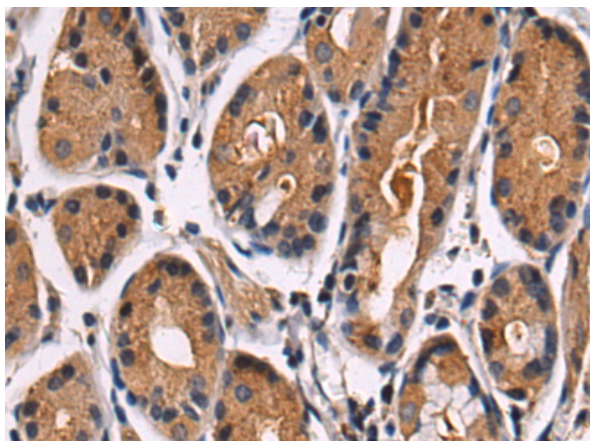
Purification: Antigen affinity purification

Species Reactivity: Human, Mouse, Rat

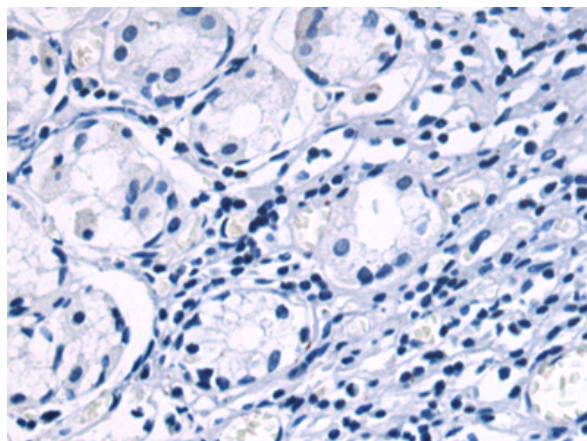
Constituents: PBS (without Mg²⁺ and Ca²⁺), pH 7.4, 150 mM NaCl, 0.05% Sodium Azide and 40% glycerol

Research Areas: Neuroscience

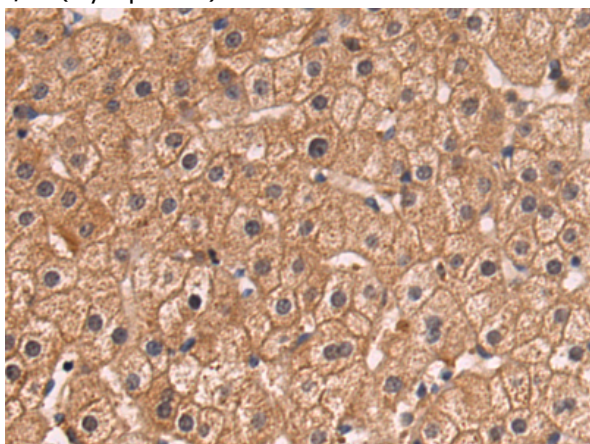
Storage & Shipping: Store at -20°C. Avoid repeated freezing and thawing



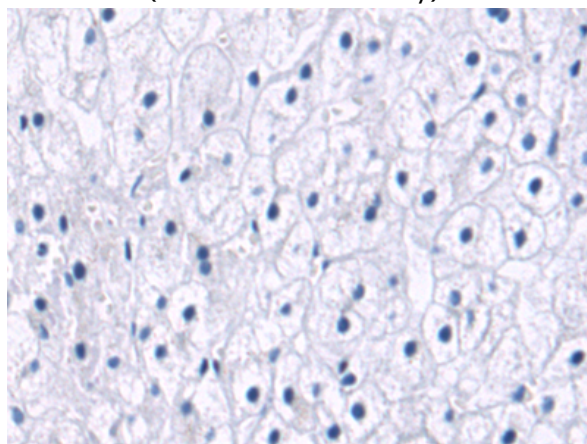
Immunohistochemistry analysis of paraffin embedded Human gastric cancer tissue using 219561(DPYSL5 Antibody) at a dilution of 1/90(Cytoplasm).



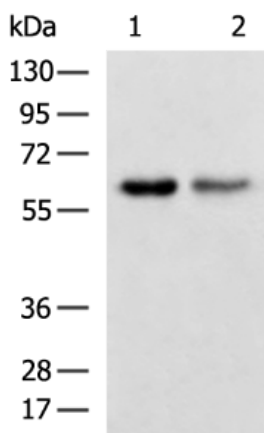
In comparison with the IHC on the left, the same paraffin-embedded Human gastric cancer tissue is first treated with the fusion protein and then with 219561(Anti-DPYSL5 Antibody) at dilution 1/90.



The image on the left is immunohistochemistry of paraffin-embedded Human liver cancer tissue using 219561(Anti-DPYSL5 Antibody) at a dilution of 1/90.



In comparison with the IHC on the left, the same paraffin-embedded Human liver cancer tissue is first treated with fusion protein and then with D227763(Anti-DPYSL5 Antibody) at dilution 1/90.



Gel: 8%SDS-PAGE, Lysate: 40 µg;
 Lane 1-2: Mouse brain tissue, Human cerebella tissue lysates;
 Primary antibody: 219561(DPYSL5 Antibody) at dilution 1/1150;
 Secondary antibody: HRP-conjugated Goat anti rabbit IgG at 1/5000 dilution;
 Exposure time: 5 seconds



Product Description

Pioneering GTPase and Oncogene Product Development since 2010
