

DRD5 RABBIT PAB

Cat.#: S210265

Product Name: Anti-DRD5 Rabbit Polyclonal Antibody

Synonyms: DBDR, DRD1B, DRD1L2

UNIPROT ID: P21918 (Gene Accession - BC009748)

Background: This gene encodes the D5 subtype of the dopamine receptor. The D5 subtype is a G-protein coupled receptor which stimulates adenylyl cyclase. This receptor is expressed in neurons in the limbic regions of the brain. It has a 10-fold higher affinity for dopamine than the D1 subtype. Pseudogenes related to this gene reside on chromosomes 1 and 2.

Immunogen: Fusion protein of human DRD5

Applications: ELISA, WB, IHC

Recommended Dilutions: IHC: 50-200;WB: 500-2000;ELISA: 1000-5000

Host Species: Rabbit

Clonality: Rabbit Polyclonal

Isotype: Immunogen-specific rabbit IgG

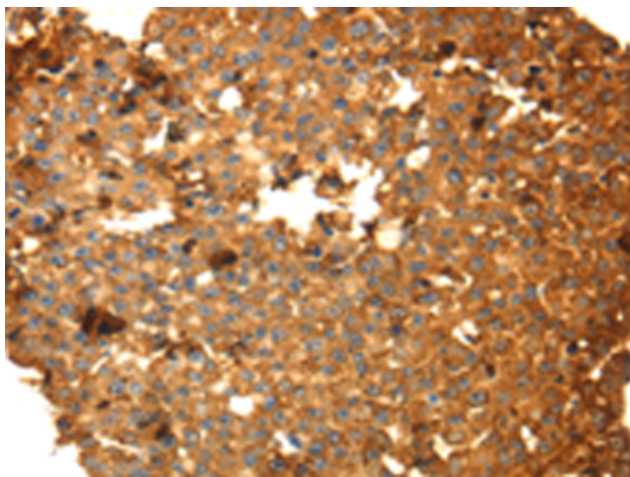
Purification: Antigen affinity purification

Species Reactivity: Human

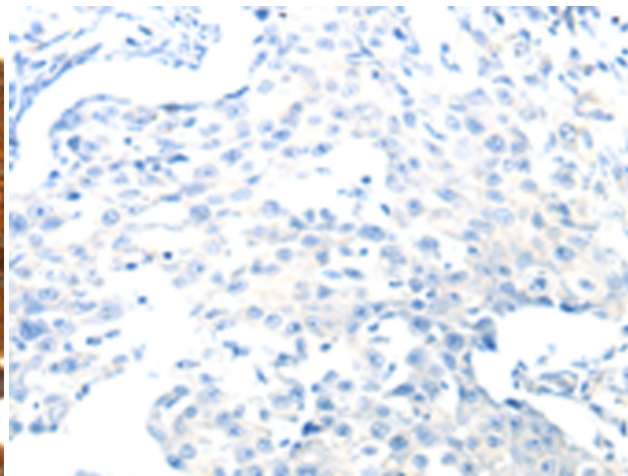
Constituents: PBS (without Mg²⁺ and Ca²⁺), pH 7.4, 150 mM NaCl, 0.05% Sodium Azide and 40% glycerol

Research Areas: Signal Transduction, Cancer, Metabolism, Neuroscience

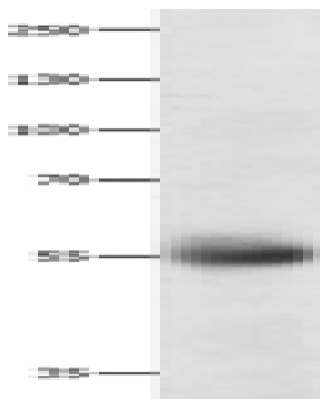
Storage & Shipping: Store at -20°C. Avoid repeated freezing and thawing



Immunohistochemistry analysis of paraffin embedded Human breast cancer tissue using 210265(DRD5 Antibody) at a dilution of 1/40(Cytoplasm).



In comparison with the IHC on the left, the same paraffin-embedded Human breast cancer tissue is first treated with the fusion protein and then with 210265(Anti-DRD5 Antibody) at dilution 1/40.



Gel: 8%SDS-PAGE, Lysate: 40 µg;
Lane: Human ovarian cancer tissue;
Primary antibody: 210265(DRD5 Antibody) at dilution 1/800;
Secondary antibody: Goat anti rabbit IgG at 1/8000 dilution;
Exposure time: 1 minute