

DSCC1 RABBIT PAB

Cat.#: S221579

Product Name: Anti-DSCC1 Rabbit Polyclonal Antibody

Synonyms: DCC1

UNIPROT ID: Q9BVC3 (Gene Accession - NP_076999)

Background: CHTF18 (MIM 613201), CHTF8 (MIM 613202), and DSCC1 are components of an alternative replication factor C (RFC) (see MIM 600404) complex that loads PCNA (MIM 176740) onto DNA during S phase of the cell cycle.

Immunogen: Synthetic peptide of human DSCC1

Applications: ELISA, WB, IHC

Recommended Dilutions: IHC: 50-200;WB: 500-2000;ELISA: 5000-10000

Host Species: Rabbit

Clonality: Rabbit Polyclonal

Isotype: Immunogen-specific rabbit IgG

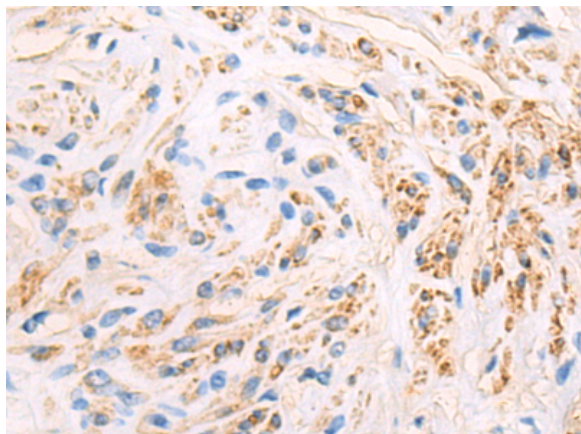
Purification: Antigen affinity purification

Species Reactivity: Human, Mouse

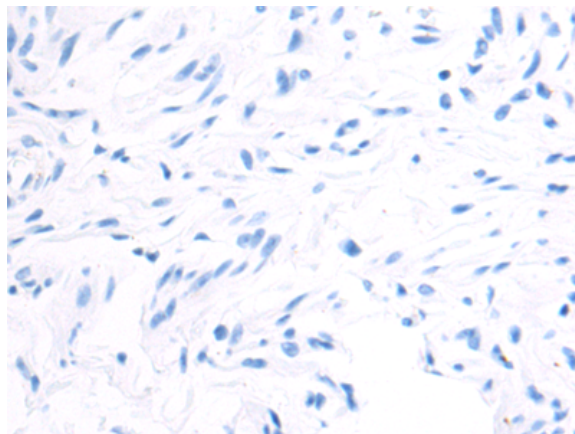
Constituents: PBS (without Mg²⁺ and Ca²⁺), pH 7.4, 150 mM NaCl, 0.05% Sodium Azide and 40% glycerol

Research Areas: Epigenetics and Nuclear Signaling, Cancer

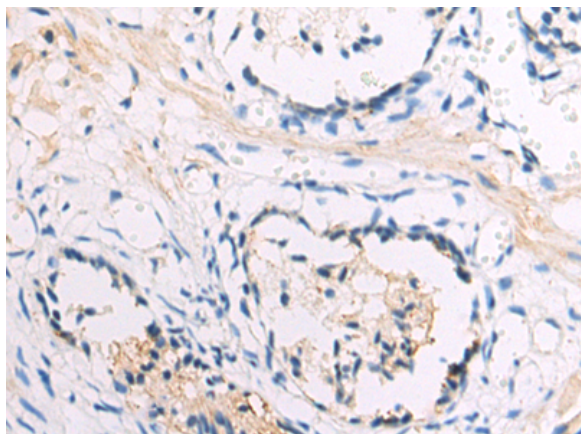
Storage & Shipping: Store at -20°C. Avoid repeated freezing and thawing



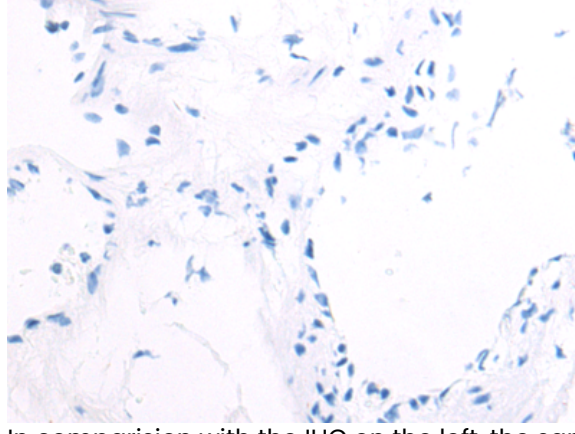
Immunohistochemistry analysis of paraffin embedded Human cervical cancer tissue using 221579(DSCC1 Antibody) at a dilution of 1/50(Cytoplasm).



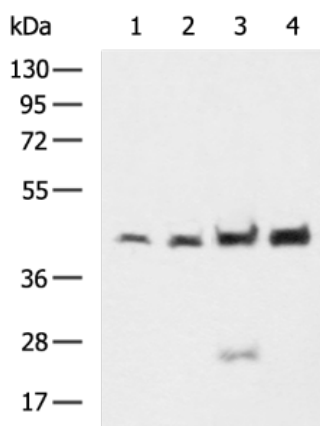
In comparison with the IHC on the left, the same paraffin-embedded Human cervical cancer tissue is first treated with the synthetic peptide and then with 221579(Anti-DSCC1 Antibody) at dilution 1/50.



The image on the left is immunohistochemistry of paraffin-embedded Human prostate cancer tissue using 221579(Anti-DSCC1 Antibody) at a dilution of 1/50.



In comparison with the IHC on the left, the same paraffin-embedded Human prostate cancer tissue is first treated with synthetic peptide and then with D263226(Anti-DSCC1 Antibody) at dilution 1/50.



Gel: 8%SDS-PAGE, Lysate: 40 µg;
 Lane 1-4: Mouse placenta tissue, Raji, 231, RAMOS cell lysates;
 Primary antibody: 221579(DSCC1 Antibody) at dilution 1/700;
 Secondary antibody: HRP-conjugated Goat anti rabbit IgG at 1/5000 dilution;
 Exposure time: 90 seconds



Product Description

Pioneering GTPase and Oncogene Product Development since 2010
