

## DTL RABBIT PAB

**Cat.#:** S218464

**Product Name:** Anti-DTL Rabbit Polyclonal Antibody

**Synonyms:** CDT2; RAMP; DCAF2; L2DTL

**UNIPROT ID:** Q9NZJ0 (Gene Accession - BC033540 )

**Background:** Contributes to ubiquitin-protein transferase activity. Involved in several processes, including protein ubiquitination; regulation of G2/M transition of mitotic cell cycle; and translesion synthesis. Located in centrosome; cytosol; and nuclear lumen. Part of Cul4A-RING E3 ubiquitin ligase complex and Cul4B-RING E3 ubiquitin ligase complex.

**Immunogen:** Fusion protein of human DTL

**Applications:** ELISA, IHC

**Recommended Dilutions:** IHC: 50-200; ELISA: 5000-10000

**Host Species:** Rabbit

**Clonality:** Rabbit Polyclonal

**Isotype:** Immunogen-specific rabbit IgG

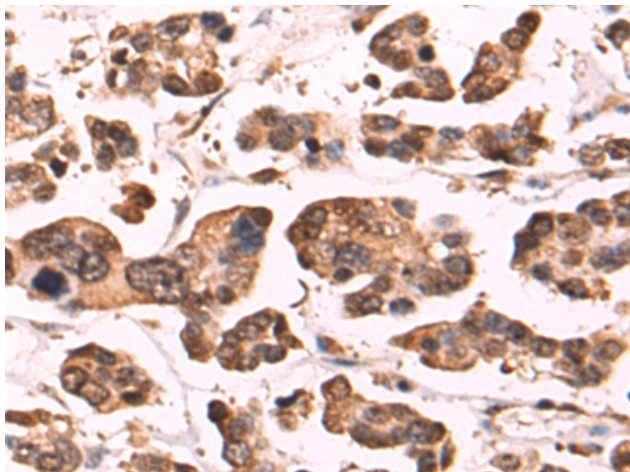
**Purification:** Antigen affinity purification

**Species Reactivity:** Human, Mouse

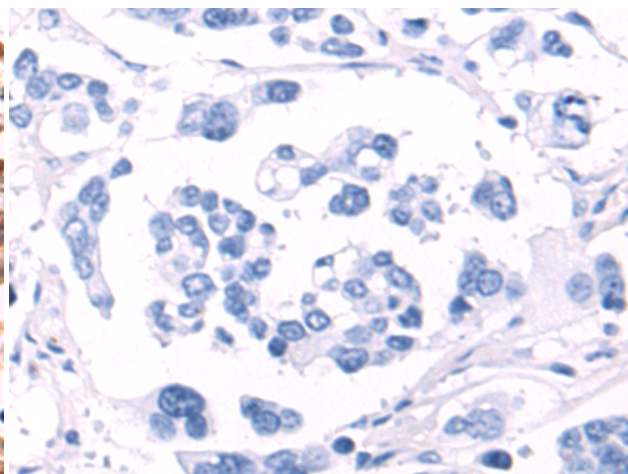
**Constituents:** PBS (without Mg<sup>2+</sup> and Ca<sup>2+</sup>), pH 7.4, 150 mM NaCl, 0.05% Sodium Azide and 40% glycerol

**Research Areas:** Cancer, Cell Biology

**Storage & Shipping:** Store at -20°C. Avoid repeated freezing and thawing



Immunohistochemistry analysis of paraffin embedded Human colorectal cancer tissue using 218464 (DTL Antibody) at a dilution of 1/70 (Cytoplasm and Nucleus).



In comparison with the IHC on the left, the same paraffin-embedded Human colorectal cancer tissue is first treated with the fusion protein and then with 218464 (Anti-DTL Antibody) at dilution 1/70.