

DTX1 RABBIT PAB

Cat.#: S219743

Product Name: Anti-DTX1 Rabbit Polyclonal Antibody

Synonyms: hDx-1; RNF140

UNIPROT ID: Q86Y01 (Gene Accession - NP_004407)

Background: Studies in *Drosophila* have identified this gene as encoding a positive regulator of the Notch-signaling pathway. The human gene encodes a protein of unknown function; however, it may play a role in basic helix-loop-helix transcription factor activity.

Immunogen: Synthetic peptide of human DTX1

Applications: ELISA, IHC

Recommended Dilutions: IHC: 25-100; ELISA: 1000-10000

Host Species: Rabbit

Clonality: Rabbit Polyclonal

Isotype: Immunogen-specific rabbit IgG

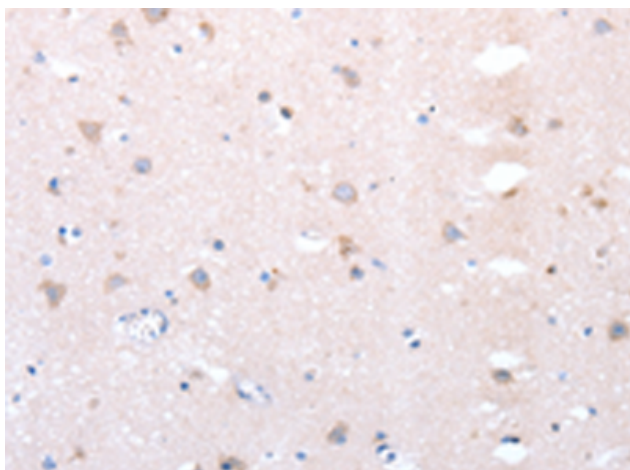
Purification: Antigen affinity purification

Species Reactivity: Human, Mouse

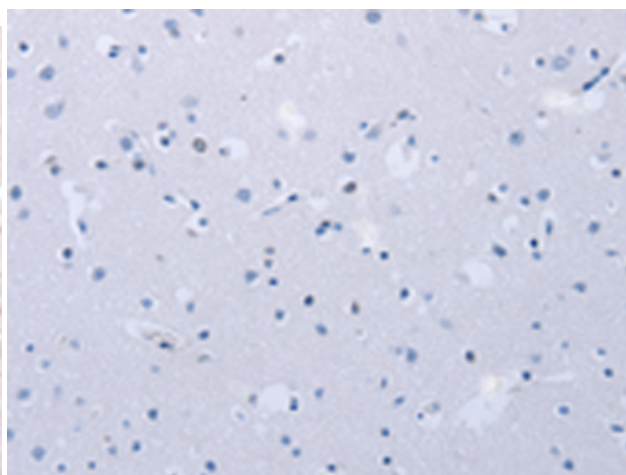
Constituents: PBS (without Mg²⁺ and Ca²⁺), pH 7.4, 150 mM NaCl, 0.05% Sodium Azide and 40% glycerol

Research Areas: Epigenetics and Nuclear Signaling, Cell Biology, Neuroscience

Storage & Shipping: Store at -20°C. Avoid repeated freezing and thawing



Immunohistochemistry analysis of paraffin embedded Human brain tissue using 219743(DTX1 Antibody) at a dilution of 1/20(Cytoplasm).



In comparison with the IHC on the left, the same paraffin-embedded Human brain tissue is first treated with the synthetic peptide and then with 219743(Anti-DTX1 Antibody) at dilution 1/20.