

DUSP3 RABBIT PAB

Cat.#: N226036

Product Name: Anti-DUSP3 Rabbit pAb

Synonyms: Dual specificity protein phosphatase VHR; VHR; Vaccinia H1-related phosphatase

UNIPROT ID: P51452

Background: Shows activity both for tyrosine-protein phosphate and serine-protein phosphate, but displays a strong preference toward phosphotyrosines.

Immunogen: A synthetic peptide of human DUSP3

Applications: WB,IHC-F,IHC-P,ICC/IF,FC,IP

Recommended Dilutions: WB: 1/500-1/1000 IHC: 1/50-1/100 IF: 1/50-1/200 IP: 1/20 FC: 1/50-1/100

Host Species: Rabbit

Clonality: Rabbit Polyclonal

Clone ID: -

MW: Calculated MW: 20 kDa; Observed MW: 20 kDa

Isotype: IgG

Purification: Affinity Purified

Species Reactivity: Human,Mouse,Rat

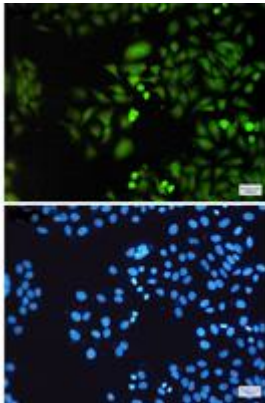
Conjugation: Unconjugated

Modification: Unmodified

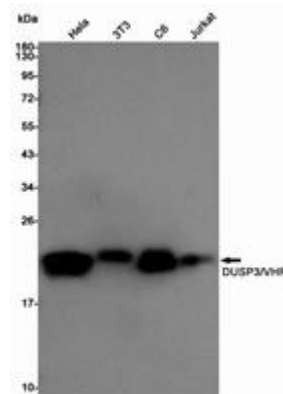
Constituents: PBS (without Mg²⁺ and Ca²⁺), pH 7.3 containing 50% glycerol, 0.5% BSA and 0.02% sodium azide

Research Areas: Signal Transduction

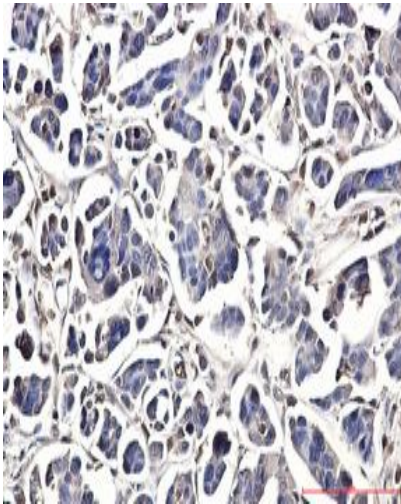
Storage & Shipping: Store at -20°C. Avoid repeated freezing and thawing



Immunocytochemistry analysis of DUSP3 (green) in HeLa using DUSP3 antibody, and DAPI (blue)



Western blot analysis of DUSP3/VHR in HeLa, 3T3, C6, Jurkat lysates using DUSP3 antibody.



Immunohistochemistry analysis of paraffin-embedded Human Cholangiocarcinoma using DUSP3 antibody. High-pressure and temperature Sodium Citrate pH 6.0 was used for antigen retrieval.