

## DUSP4 RABBIT PAB

**Cat.#:** S216501

**Product Name:** Anti-DUSP4 Rabbit Polyclonal Antibody

**Synonyms:** TYP, HVH2, MKP2, MKP-2

**UNIPROT ID:** Q13115 (Gene Accession - BC002671 )

**Background:** The protein encoded by this gene is a member of the dual specificity protein phosphatase subfamily. These phosphatases inactivate their target kinases by dephosphorylating both the phosphoserine/threonine and phosphotyrosine residues. They negatively regulate members of the mitogen-activated protein (MAP) kinase superfamily (MAPK/ERK, SAPK/JNK, p38), which are associated with cellular proliferation and differentiation. Different members of the family of dual specificity phosphatases show distinct substrate specificities for various MAP kinases, different tissue distribution and subcellular localization, and different modes of inducibility of their expression by extracellular stimuli. This gene product inactivates ERK1, ERK2 and JNK, is expressed in a variety of tissues, and is localized in the nucleus. Two alternatively spliced transcript variants, encoding distinct isoforms, have been observed for this gene. In addition, multiple polyadenylation sites have been reported.

**Immunogen:** Fusion protein of human DUSP4

**Applications:** ELISA, WB, IHC

**Recommended Dilutions:** IHC: 50-150;WB: 500-2000;ELISA: 1000-5000

**Host Species:** Rabbit

**Clonality:** Rabbit Polyclonal

**Isotype:** Immunogen-specific rabbit IgG

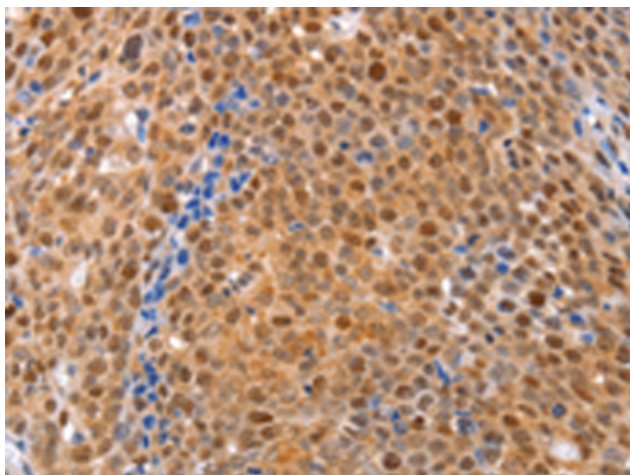
**Purification:** Antigen affinity purification

**Species Reactivity:** Human, Mouse, Rat

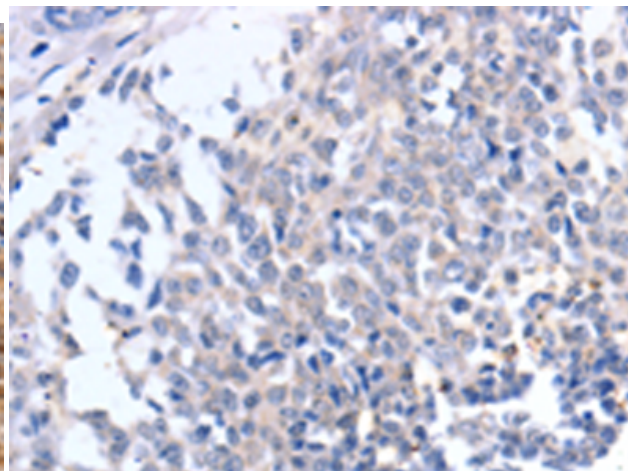
**Constituents:** PBS (without Mg<sup>2+</sup> and Ca<sup>2+</sup>), pH 7.4, 150 mM NaCl, 0.05% Sodium Azide and 40% glycerol

**Research Areas:** Signal Transduction, Cancer

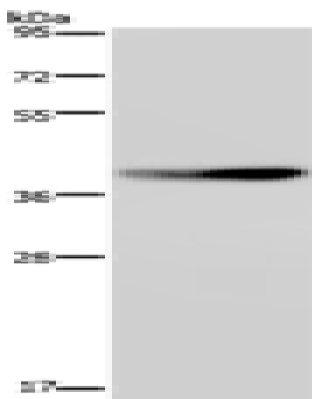
**Storage & Shipping:** Store at -20°C. Avoid repeated freezing and thawing



Immunohistochemistry analysis of paraffin embedded Human ovarian cancer tissue using 216501(DUSP4 Antibody) at a dilution of 1/30(Cytoplasm, Nucleus).



In comparison with the IHC on the left, the same paraffin-embedded Human ovarian cancer tissue is first treated with the fusion protein and then with 216501(Anti-DUSP4 Antibody) at dilution 1/30.



Gel: 10%SDS-PAGE, Lysate: 30 µg;  
Lane: RAW264.7 cells;  
Primary antibody: 216501(DUSP4 Antibody) at dilution 1/600;  
Secondary antibody: Goat anti rabbit IgG at 1/8000 dilution;  
Exposure time: 1 minute